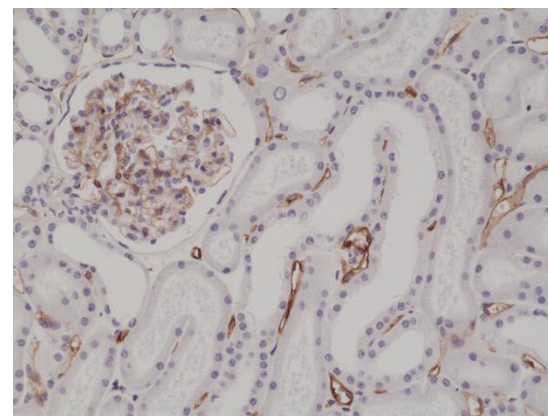


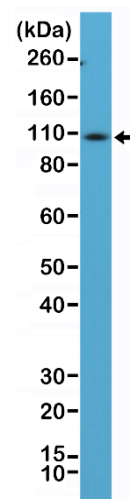
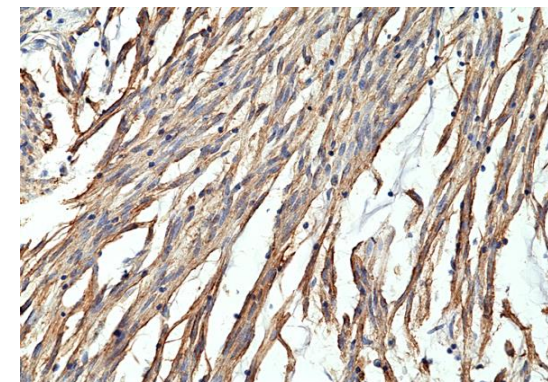
Certificate of Analysis

Product:	Rabbit Monoclonal Antibody Anti-CD34 Rabbit Monoclonal Antibody, Clone RM300
Catalog No.:	31-1185-00
Lot No.:	
Clone:	RM300
Specificity:	This antibody reacts to human, mouse and rat CD34.
Application:	Immunohistochemistry, Western Blot
Immunogen:	A peptide corresponding to the C-terminus of human CD34
Purity:	Protein A affinity purified from an animal origin-free culture supernatant
Size:	100 µL
Buffer:	50% Glycerol/PBS with 1% BSA and 0.09% sodium azide
Usage:	IHC: 1:100 -1:200 dilution; WB: 1:100 - 1:200 dilution.
Storage and Stability:	Stable for 1 Year at -20.0°C from date of receipt.
Country of Origin:	U.S.A.
Intended Use:	For Research Use Only Not for Diagnostic or Therapeutic Use



Immunohistochemical staining of formalin fixed and paraffin embedded human kidney tissue section using anti-CD34 rabbit monoclonal antibody (Clone RM300) at a 1:200 dilution.

Immunohistochemical staining of formalin fixed and paraffin embedded human gastrointestinal stromal tumor tissue section using anti-CD34 rabbit monoclonal antibody



Western Blot of mouse spleen tissue lysate using anti-CD34 rabbit monoclonal antibody (Clone RM300) at a 1:100 dilution.