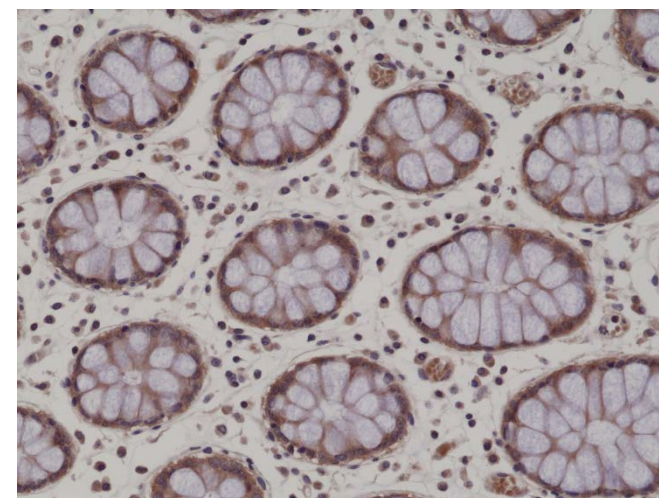
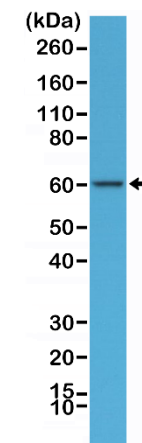


Certificate of Analysis

Product:	Rabbit Monoclonal Antibody Anti-AMPK alpha-1 Rabbit Monoclonal Antibody, Clone RM301
Catalog No.:	31-1186-00
Lot No.:	
Clone:	RM301
Specificity:	This antibody reacts to human AMPK alpha-1 (AMPK α 1) (5'-AMP-activated protein kinase catalytic subunit alpha-1).
Application:	Immunohistochemistry, Western Blot
Immunogen:	A peptide corresponding to the residues around the C-terminus of human AMPK alpha-1.
Purity:	Protein A affinity purified from an animal origin-free culture supernatant
Size:	100 μ L
Buffer:	50% Glycerol/PBS with 1% BSA and 0.09% sodium azide
Usage:	IHC: 1:100 -1:200 dilution; WB: 1:100 - 1:200 dilution.
Storage and Stability:	Stable for 1 Year at -20.0°C from date of receipt.
Country of Origin:	U.S.A.
Intended Use:	For Research Use Only Not for Diagnostic or Therapeutic Use



Immunohistochemical staining of formalin fixed and paraffin embedded human colon tissue section using anti-AMPK alpha-1 rabbit monoclonal antibody (clone RM301) at a 1:200 dilution.



Western Blot of HeLa cells lysate using anti-AMPK alpha-1 rabbit monoclonal antibody (clone RM301) at a 1:100 dilution.