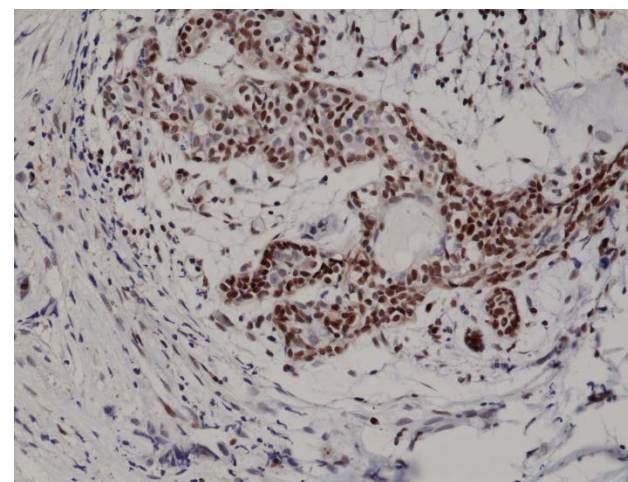
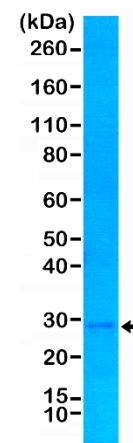


Certificate of Analysis

| | |
|-------------------------------|---|
| Product: | Rabbit Monoclonal Antibody Anti-p27 Kip1 Rabbit Monoclonal Antibody, Clone RM302 |
| Catalog No.: | 31-1187-00 |
| Lot No.: | |
| Clone: | RM302 |
| Specificity: | This antibody reacts to human p27Kip1 (Cyclin-dependent kinase inhibitor 1B). It may also react to mouse p27Kip1, as predicted by immunogen homology. |
| Application: | Immunohistochemistry, Western Blot |
| Immunogen: | A peptide corresponding to the C-terminus of human p27Kip1. |
| Purity: | Protein A affinity purified from an animal origin-free culture supernatant |
| Size: | 100 µL |
| Buffer: | 50% Glycerol/PBS with 1% BSA and 0.09% sodium azide |
| Usage: | IHC: 1:100 -1:200 dilution; WB: 1:500 - 1:1000 dilution. |
| Storage and Stability: | Stable for 1 Year at -20.0°C from date of receipt. |
| Country of Origin: | U.S.A. |
| Intended Use: | For Research Use Only Not for Diagnostic or Therapeutic Use |



Immunohistochemical staining of formalin fixed and paraffin embedded human breast cancer tissue section using anti-p27Kip1 rabbit monoclonal antibody (clone RM302) at a 1:200 dilution.



Western Blot of MCF-7 cells lysate using anti-p27Kip1 rabbit monoclonal antibody (clone RM3.2) at a 1:1000 dilution.