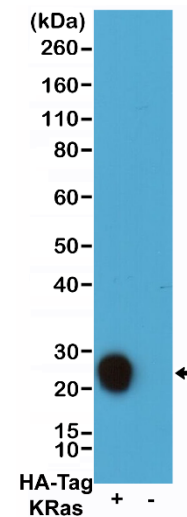
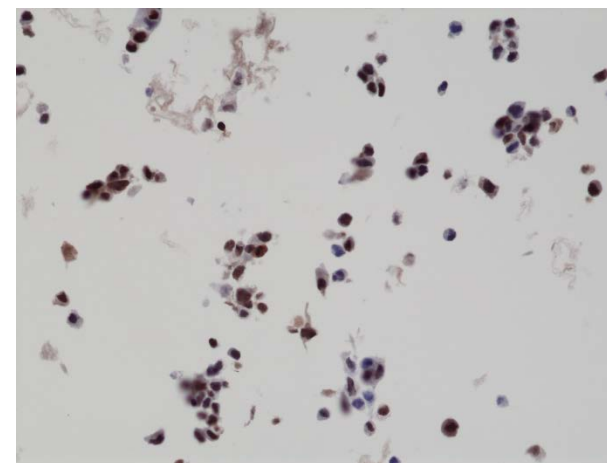


Certificate of Analysis

Product:	Rabbit Monoclonal Antibody Anti-HA-Tag Rabbit Monoclonal Antibody, Clone RM305
Catalog No.:	31-1190-00
Lot No.:	
Clone	RM305
Specificity	This antibody reacts to recombinant proteins containing a HA-Tag fused to either the amino or carboxy terminus. No cross reactivity with other endogenous protein.
Application:	Western Blot, Immunoprecipitation, Immunocytochemistry, Flow Cytometry, Immunohistochemistry
Immunogen:	A peptide corresponding to HA-tag (Human influenza hemagglutinin amino acids 98-106)
Purity:	Protein A affinity purified from an animal origin-free culture supernatant.
Concentration:	1.0 mg/mL
Buffer:	50% Glycerol/PBS with 1% BSA and 0.09% sodium azide
Usage:	WB: 0.1 µg/mL – 1 µg/mL; IP: 0.5 µg/mL – 2 µg/mL; ICC, FC: 0.1 µg/mL – 1 µg/mL; IHC: 0.01 µg/mL – 0.5 µg/mL.
Storage and Stability:	Stable for 1 Year at -20.0°C from date of receipt.
Country of Origin:	U.S.A.
Intended Use:	For Research Use Only Not for Diagnostic or Therapeutic Use



Western blot of 293T cells transfected (+) or non-transfected (-) with a DNA construct encoding HA-Tag KRas fusion protein, using anti-HA-tag rabbit monoclonal antibody (clone RM305) at 0.1 µg/mL.



Immunohistochemical staining of formalin fixed and paraffin embedded LNCaP cells overexpressing HA-tag Bag1 protein, using anti-HA-tag rabbit monoclonal antibody (clone RM305) at 0.01 µg/mL.