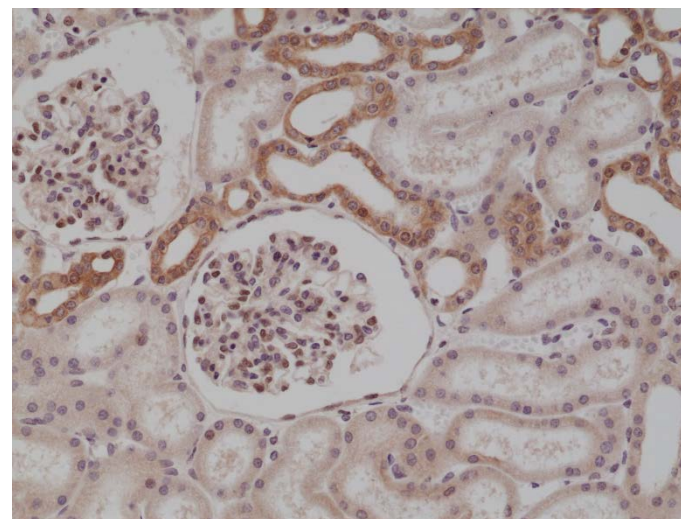
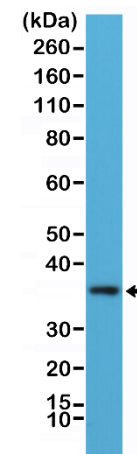


Certificate of Analysis

Product:	Rabbit Monoclonal Antibody Anti-MyD88 Rabbit Monoclonal Antibody, Clone RM306
Catalog No.:	31-1192-00
Lot No.:	
Clone:	RM306
Specificity:	This antibody reacts to human myeloid differentiation primary response protein MyD88
Application:	Immunohistochemistry, Western Blot
Immunogen:	A peptide corresponding to the N-terminus of human MyD88
Purity:	Protein A affinity purified from an animal origin-free culture supernatant
Size:	100 µL
Buffer:	50% Glycerol/PBS with 1% BSA and 0.09% sodium azide
Usage:	IHC: 1:100 -1:250 dilution; WB: 1:100 - 1:200 dilution.
Storage and Stability:	Stable for 1 Year at -20.0°C from date of receipt.
Country of Origin:	U.S.A.
Intended Use:	For Research Use Only Not for Diagnostic or Therapeutic Use



Immunohistochemical staining of formalin fixed and paraffin embedded human kidney tissue section using anti-MyD88 rabbit monoclonal antibody (Clone RM306) at a 1:250 dilution.



Western Blot of K562 cells lysate using anti-MyD88 rabbit monoclonal antibody (Clone RM306) at a 1:100 dilution.