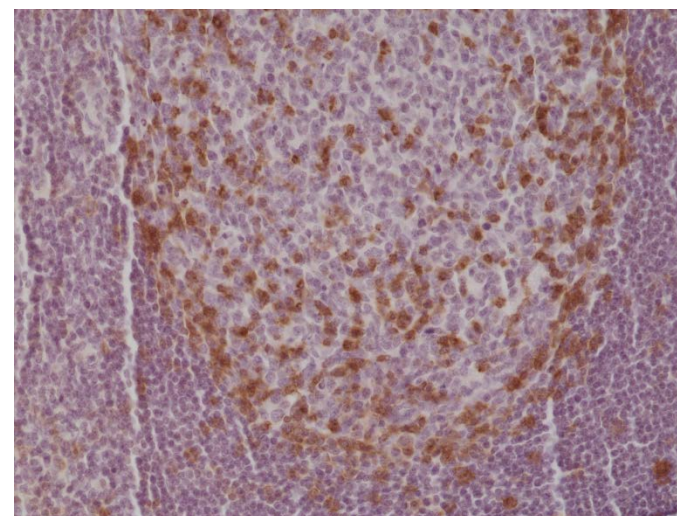
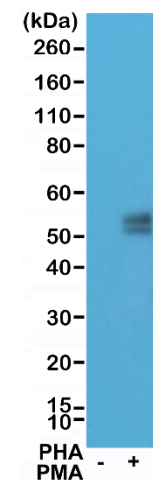


Certificate of Analysis

Product:	Rabbit Monoclonal Antibody Anti-PD-1 (CD279) Rabbit Monoclonal Antibody, Clone RM309
Catalog No.:	31-1195-00
Lot No.:	
Clone:	RM309
Specificity:	This antibody reacts to human PD-1 (Programmed cell death protein 1) (CD279)
Application:	Immunohistochemistry, Western Blot
Immunogen:	A peptide corresponding to the N-terminus of human PD-1
Purity:	Protein A affinity purified from an animal origin-free culture supernatant
Size:	100 µL
Buffer:	50% Glycerol/PBS with 1% BSA and 0.09% sodium azide
Usage:	IHC: 1:200 -1:500 dilution; WB: 1:100 - 1:200 dilution.
Storage and Stability:	Stable for 1 Year at -20.0°C from date of receipt.
Country of Origin:	U.S.A.
Intended Use:	For Research Use Only Not for Diagnostic or Therapeutic Use



Immunohistochemical staining of formalin fixed and paraffin embedded human tonsil tissue section using anti-PD-1 rabbit monoclonal antibody (Clone RM309) at a 1:500 dilution.



Western Blot the lysates of Jurkat cells non-treated (-) or treated (+) with PHA and PMA, using anti- PD-1 (CD279) rabbit monoclonal antibody (Clone RM309) at a 1:100 dilution.