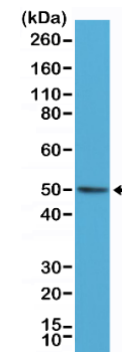
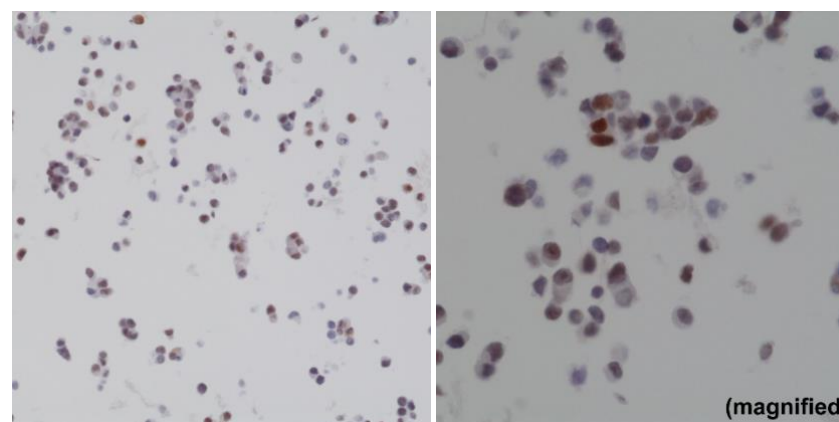


Certificate of Analysis

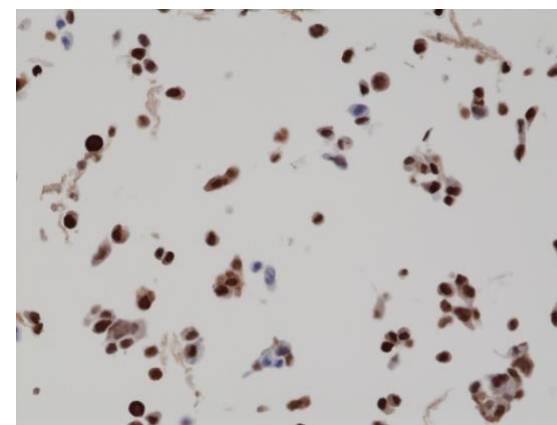
Product:	Rabbit Monoclonal Antibody Anti-BAG-1L Rabbit Monoclonal Antibody, Clone RM310
Catalog No.:	31-1196-00
Lot No.:	
Clone:	RM310
Specificity:	This antibody reacts to human BAG-1L. It does not cross react to BAG-1M or BAG-1S.
Application:	Western Blot, Immunohistochemistry, Immunocytochemistry, Immunoprecipitation
Immunogen:	A peptide corresponding to residues near the N-terminus of human BAG-1L
Purity:	Protein A affinity purified from an animal origin-free culture supernatant
Size:	100 µL
Buffer:	50% Glycerol/PBS with 1% BSA and 0.09% sodium azide
Usage:	WB: 1:1000 - 1:2000 dilution; IHC: 1:500 – 1:2000 dilution ICC: 1:200 - 1:1000 dilution.
Storage and Stability:	Stable for 1 Year at -20.0°C from date of receipt.
Country of Origin:	U.S.A.
Intended Use:	For Research Use Only Not for Diagnostic or Therapeutic Use



Western Blot of HeLa cell lysate, using anti-BAG-1L rabbit monoclonal antibody (Clone RM310) at a 1:1000 dilution.



Immunohistochemical staining of formalin fixed and paraffin embedded 22RV1 cell section using anti-BAG-1L rabbit monoclonal antibody (Clone RM310) at a 1:2000 dilution.



Immunohistochemical staining of formalin fixed and paraffin embedded BAG-1L overexpressing LNCaP cell section using anti-BAG-1L rabbit monoclonal antibody (Clone RM310) at a 1:2000 dilution.