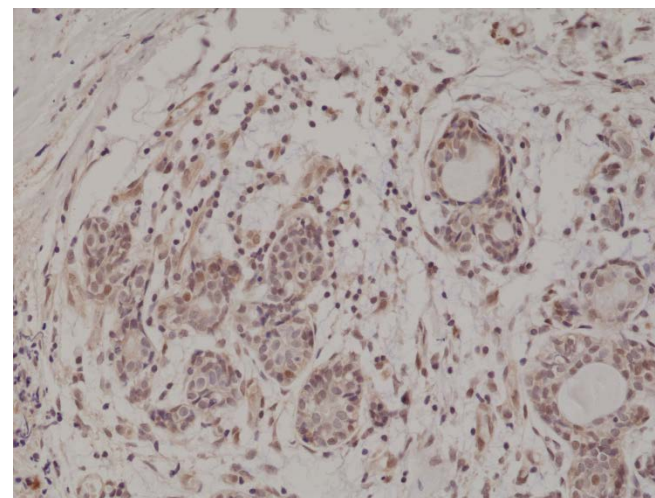
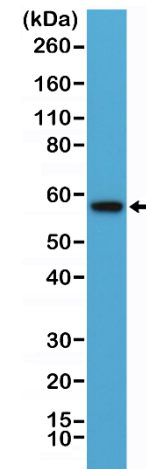


## Certificate of Analysis

|                               |   |
|-------------------------------|---|
| <b>Product:</b>               | Rabbit Monoclonal Antibody<br>Anti-AKT (PH domain) Rabbit Monoclonal Antibody,<br>Clone RM316                             |
| <b>Catalog No.:</b>           | 31-1202-00  |
| <b>Lot No.:</b>               |   |
| <b>Clone:</b>                 | RM316   |
| <b>Specificity:</b>           | This antibody reacts to human AKT (PH domain). It may also react to mouse or rat AKT, as predicted by immunogen homology. |
| <b>Application:</b>           | Immunohistochemistry, Western Blot  |
| <b>Immunogen:</b>             | A peptide corresponding to the PH domain of human AKT   |
| <b>Purity:</b>                | Protein A affinity purified from an animal origin-free culture supernatant  |
| <b>Size:</b>                  | 100 µL  |
| <b>Buffer:</b>                | 50% Glycerol/PBS with 1% BSA and 0.09% sodium azide   |
| <b>Usage:</b>                 | IHC: 1:200 -1:500 dilution;<br>WB: 1:5000 - 1:10000 dilution.   |
| <b>Storage and Stability:</b> | Stable for 1 Year at -20.0°C from date of receipt.  |
| <b>Country of Origin:</b>     | U.S.A.  |
| <b>Intended Use:</b>          | <b>For Research Use Only Not for Diagnostic or Therapeutic Use</b>  |



Immunohistochemical staining of formalin fixed and paraffin embedded human breast cancer tissue section using anti-AKT (PH domain) rabbit monoclonal antibody (Clone RM316) at a 1:500 dilution.



Western Blot of 293 cells lysate using anti-AKT (PH domain) rabbit monoclonal antibody (Clone RM316) at a 1:10000 dilution.