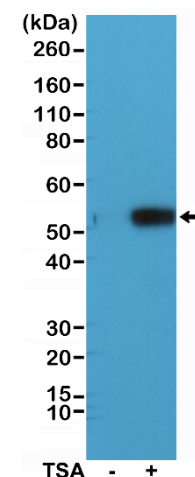
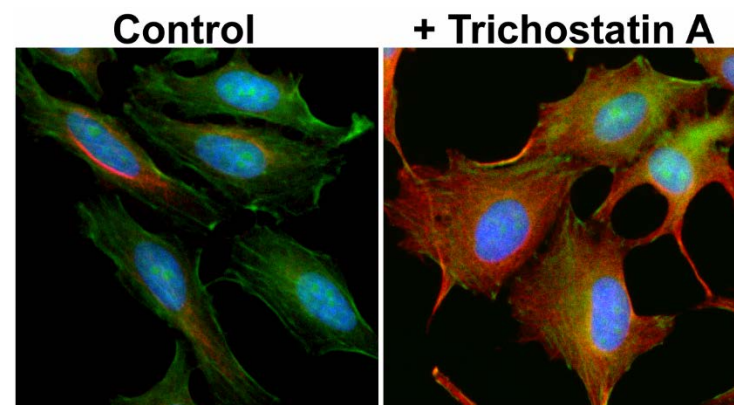


## Certificate of Analysis

|                               |  |
|-------------------------------|--|
| <b>Product:</b>               | Rabbit Monoclonal Antibody<br>Anti-Acetyl-alpha-Tubulin (Lys40) Rabbit Monoclonal Antibody, Clone RM318                          |
| <b>Catalog No.:</b>           | 31-1204-00   |
| <b>Lot No.:</b>               |  |
| <b>Clone:</b>                 | RM318  |
| <b>Specificity:</b>           | This antibody reacts to alpha-Tubulin acetylated at Lysine 40. No cross reactivity to non-acetylated alpha-Tubulin at Lysine 40. |
| <b>Application:</b>           | Western Blot, Immunocytochemistry  |
| <b>Immunogen:</b>             | An acetyl-peptide corresponding to Acetyl- alpha-Tubulin (Lys40)   |
| <b>Purity:</b>                | Protein A affinity purified from an animal origin-free culture supernatant   |
| <b>Size:</b>                  | 100 µL   |
| <b>Buffer:</b>                | 50% Glycerol/PBS with 1% BSA and 0.09% sodium azide  |
| <b>Usage:</b>                 | WB: 1:1000 -1:2000 dilution;<br>ICC: 1:1000 - 1:5000 dilution.   |
| <b>Storage and Stability:</b> | Stable for 1 Year at -20.0°C from date of receipt.   |
| <b>Country of Origin:</b>     | U.S.A.   |
| <b>Intended Use:</b>          | <b>For Research Use Only Not for Diagnostic or Therapeutic Use</b>   |



Western Blot analysis of HeLa cell lysates non-treated (-) or treated (+) with Trichostatin A (TSA), using anti-Acetyl-alpha-Tubulin (Lys40) rabbit monoclonal antibody (Clone RM318) at a 1:1000 dilution.



Immunocytochemistry of HeLa cells non-treated or treated with Trichostatin A (TSA), using anti-Acetyl-alpha-Tubulin (Lys40) rabbit monoclonal antibody (Clone RM318) at a 1:5000 dilution (red). Actin filaments have been labeled with fluorescein phalloidin (green), and nuclei with DAPI (blue).