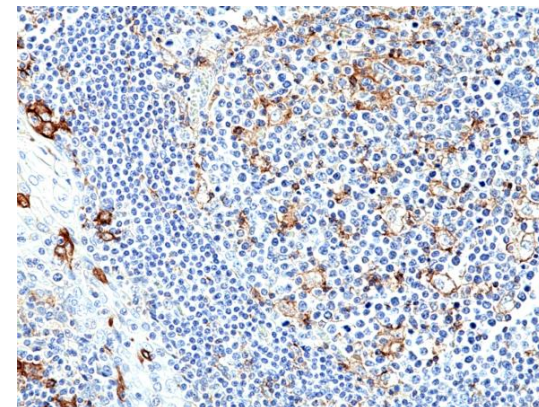
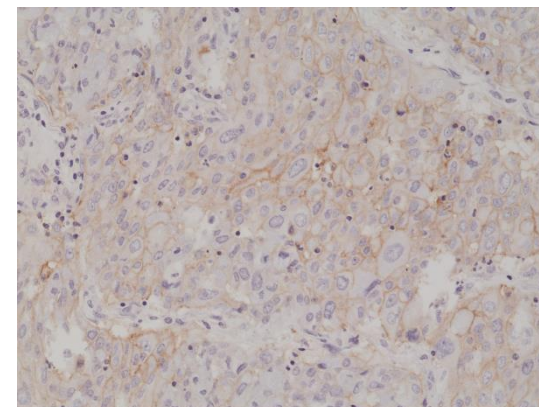


Certificate of Analysis

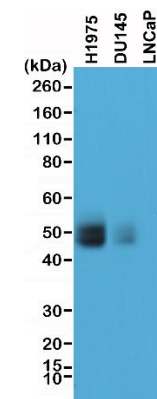
Product:	Rabbit Monoclonal Antibody Anti-PD-L1 (CD274) (B7-H1) Rabbit Monoclonal Antibody, Clone RM320
Catalog No.:	31-1205-00
Lot No.:	
Clone:	RM320
Specificity:	This antibody reacts to human PD-L1 (CD274) (B7-H1)
Application:	Immunohistochemistry, Immunocytochemistry, Western Blot
Immunogen:	A peptide corresponding to the C-terminus of human PD-L1
Purity:	Protein A affinity purified from an animal origin-free culture supernatant
Size:	100 µL
Buffer:	50% Glycerol/PBS with 1% BSA and 0.09% sodium azide
Usage:	IHC: 1:200 -1:1000 dilution; ICC: 1:200 – 1:500 dilution WB: 1:500 - 1:1000 dilution.
Storage and Stability:	Stable for 1 Year at -20.0°C from date of receipt.
Country of Origin:	U.S.A.
Intended Use:	For Research Use Only Not for Diagnostic or Therapeutic Use



Immunohistochemical staining of formalin fixed and paraffin embedded human tonsil tissue section using anti-PD-L1 rabbit monoclonal antibody (Clone RM320) at a 1:250 dilution.



Immunohistochemical staining of formalin fixed and paraffin embedded human lung cancer section using anti-PD-L1 rabbit monoclonal antibody (Clone RM320) at a 1:1000 dilution.



Western Blot of lysates of H1975, DU145, and LNCaP cells, using anti-PD-L1 rabbit monoclonal antibody (Clone RM320) at a 1:1000 dilution.