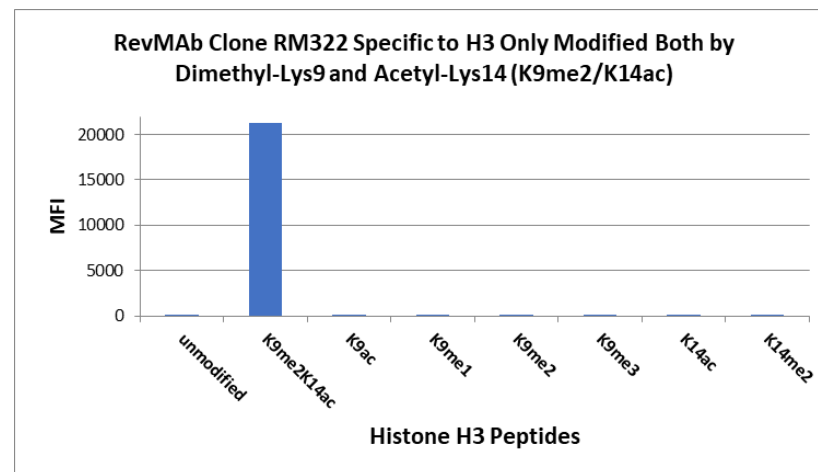
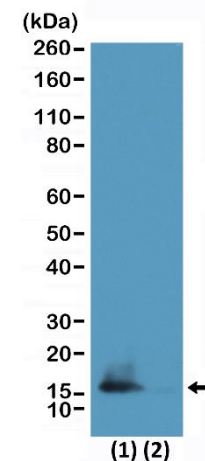


Certificate of Analysis

Product:	Rabbit Monoclonal Antibody Anti-Dimethyl-Histone H3 (Lys9) and Acetyl-Histone H3 (Lys14) Rabbit Monoclonal Antibody, Clone RM322
Catalog No.:	31-1207-00
Lot No.:	
Clone	RM322
Specificity	This antibody reacts to Histone H3 only when modified by both methylation at lysine 9 and acetylation at lysine 14 (K9me2/K14ac). No cross reactivity with monomethylated Lysine 9 (K9me1), dimethylated Lysine 9 (K9me2), trimethylated Lysine 9 (K9me3), or acetylated Lysine 9/14 only, in histone H3.
Application:	Western Blot, Multiplex
Immunogen:	A dimethyl-peptide corresponding to dimethyl-Histone H3 (Lys9) and an acetyl-peptide corresponding to Acetyl-Histone H3 (Lys14).
Purity:	Protein A affinity purified from an animal origin-free culture supernatant
Size:	100 µg
Concentration:	1.0 mg/mL
Buffer:	50% Glycerol/PBS with 1% BSA and 0.09% sodium azide
Usage:	WB: 0.1 µg/mL – 1 µg/mL; Multiplex: 0.01 µg/mL – 1 µg/mL.
Storage and Stability:	Stable for 1 Year at -20.0°C from date of receipt.
Country of Origin:	U.S.A.
Intended Use:	For Research Use Only Not for Diagnostic or Therapeutic Use



RM322 specifically reacts to Histone H3 only when modified at both dimethyl-lysine 9 and acetyl-lysine 14 (K9me2/K14ac). No cross reactivity with non-modified Lysine 9/14, methylated Lysine 9 (K9me1, K9me2, K9me3) ONLY, acetylated Lysine 9/14 ONLY, or methylated Lysine 14 (K14me2) ONLY, in Histone H3.



Western Blot of HeLa cells (1) and recombinant histone H3.3 (2) using RM322 at 0.5 µg/mL.