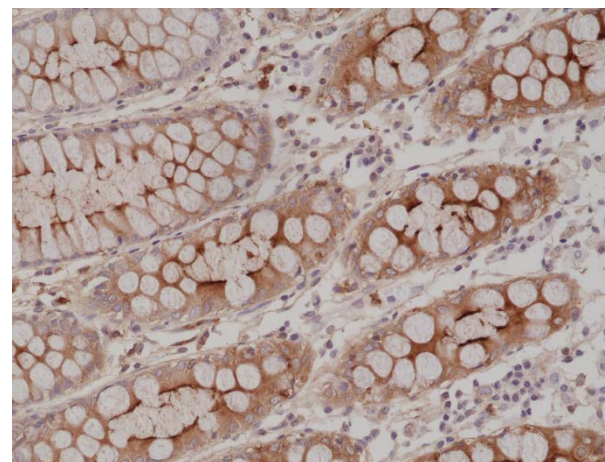
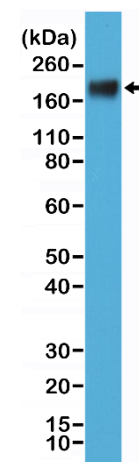


Certificate of Analysis

Product:	Rabbit Monoclonal Antibody Anti-CEA (Carcinoembryonic Antigen) (CD66e) Rabbit Monoclonal Antibody, Clone RM326
Catalog No.:	31-1213-00
Lot No.:	
Clone:	RM326
Specificity:	This antibody reacts to human CEA (Carcinoembryonic Antigen) (CD66e).
Application:	Immunohistochemistry, Western Blot, ELISA
Immunogen:	Native CEA protein purified from human liver tissue.
Purity:	Protein A affinity purified from an animal origin-free culture supernatant
Size:	100 µL
Buffer:	50% Glycerol/PBS with 1% BSA and 0.09% sodium azide
Usage:	IHC: 1:1000 - 1:2000 dilution; WB: 1:1000 - 1:2000 dilution; ELISA: 1:1000 - 1:5000 dilution.
Storage and Stability:	Stable for 1 Year at -20.0°C from date of receipt.
Country of Origin:	U.S.A.
Intended Use:	For Research Use Only Not for Diagnostic or Therapeutic Use



Immunohistochemical staining of formalin fixed and paraffin embedded human colon tissue section using anti-CEA rabbit monoclonal antibody (Clone RM326) at a 1:2000 dilution.



Western Blot of MCF-7 cell lysate using anti-CEA rabbit monoclonal antibody (Clone RM326) at a 1:1000 dilution.