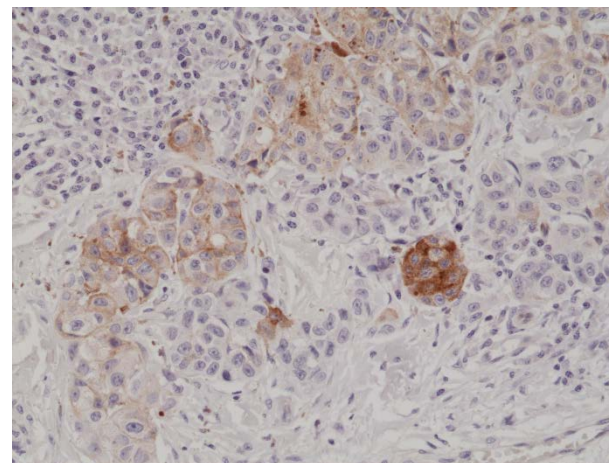
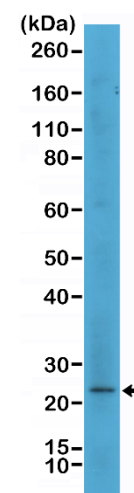


Certificate of Analysis

Product:	Rabbit Monoclonal Antibody Anti-MART1 (Melanoma antigen recognized by T-cells 1) Rabbit Monoclonal Antibody, Clone RM333
Catalog No.:	31-1220-00
Lot No.:	
Clone:	RM333
Specificity:	This antibody reacts to human MART1 (Melanoma antigen recognized by T-cells-1).
Application:	Immunohistochemistry, Western Blot
Immunogen:	A peptide corresponding to the N-terminus of human MART1 (Melanoma antigen recognized by T-cells-1).
Purity:	Protein A affinity purified from an animal origin-free culture supernatant
Size:	100 µL
Buffer:	50% Glycerol/PBS with 1% BSA and 0.09% sodium azide
Usage:	IHC: 1:500 - 1:1000 dilution; WB: 1:500 - 1:1000 dilution.
Storage and Stability:	Stable for 1 Year at -20.0°C from date of receipt.
Country of Origin:	U.S.A.
Intended Use:	For Research Use Only Not for Diagnostic or Therapeutic Use



Immunohistochemical staining of formalin fixed and paraffin embedded human melanoma tissue section using anti-MART1 rabbit monoclonal antibody (Clone RM333) at a 1:1000 dilution.



Western Blot of SK-MEL-2 cell lysate using anti-MART1 rabbit monoclonal antibody (Clone RM333) at a 1:500 dilution.