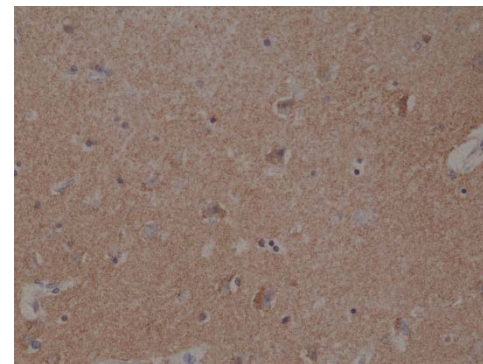
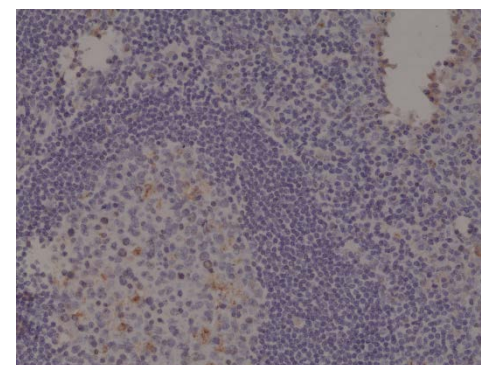


Certificate of Analysis

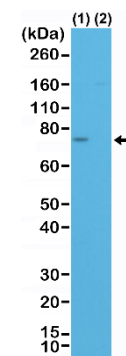
| | |
|-------------------------------|--|
| Product: | Rabbit Monoclonal Antibody Anti-Spastin Rabbit Monoclonal Antibody, Clone RM346 |
| Catalog No.: | 31-1232-00 |
| Lot No.: | |
| Clone: | RM346 |
| Specificity: | This antibody reacts to human Spastin. |
| Application: | Immunohistochemistry, Western Blot |
| Immunogen: | A peptide corresponding to the N-terminus of human Spastin. |
| Purity: | Protein A affinity purified from an animal origin-free culture supernatant |
| Size: | 100 µL |
| Buffer: | 50% Glycerol/PBS with 1% BSA and 0.09% sodium azide |
| Usage: | IHC: 1:500 -1:1000 dilution; WB: 1:500 - 1:1000 dilution. |
| Storage and Stability: | Stable for 1 Year at -20.0°C from date of receipt. |
| Country of Origin: | U.S.A. |
| Intended Use: | For Research Use Only Not for Diagnostic or Therapeutic Use |



Immunohistochemical staining of formalin fixed and paraffin embedded human Brain tissue section using anti-Spastin rabbit monoclonal antibody (Clone RM346) at a 1:1000 dilution.



Immunohistochemical staining of formalin fixed and paraffin embedded human Tonsil tissue section using anti-Spastin rabbit monoclonal antibody (Clone RM346) at a 1:1000 dilution.



Western Blot of lysate from HeLa cells, transfected with Control siRNA (1) or Spastin siRNA, using anti-Spastin rabbit monoclonal antibody (Clone RM346) at a 1:500 dilution.