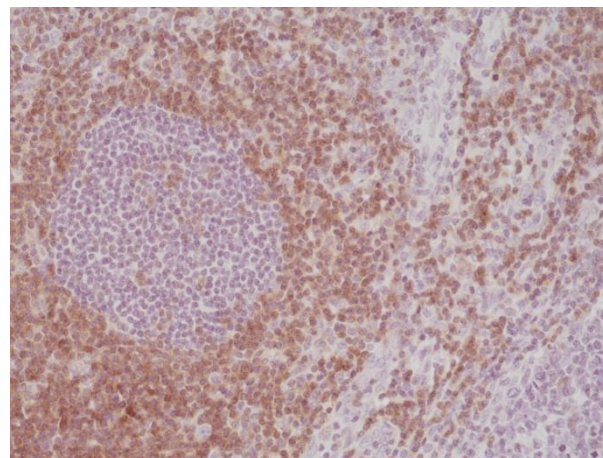


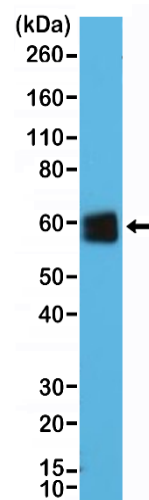
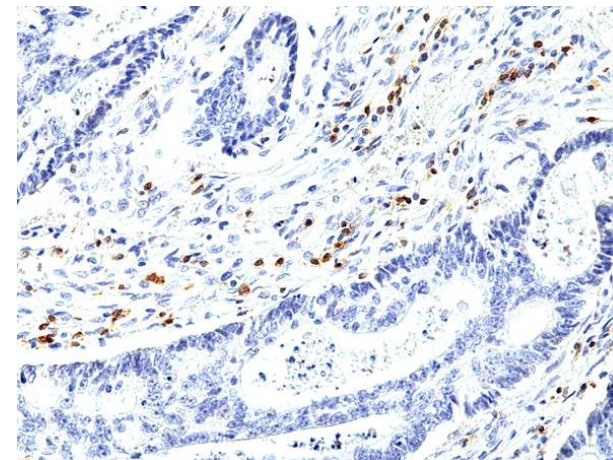
Certificate of Analysis

Product:	Rabbit Monoclonal Antibody Anti-CD5 Rabbit Monoclonal Antibody, Clone RM354
Catalog No.:	31-1240-00
Lot No.:	
Clone:	RM354
Specificity:	This antibody reacts to human CD5
Application:	Immunohistochemistry, Western Blot
Immunogen:	A peptide corresponding to the N-terminus (extracellular domain) of human T-cell surface glycoprotein CD5
Purity:	Protein A affinity purified from an animal origin-free culture supernatant
Size:	100 µL
Buffer:	50% Glycerol/PBS with 1% BSA and 0.09% sodium azide
Usage:	IHC: 1:200 -1:500 dilution; WB: 1:10000 -1:25000 dilution.
Storage and Stability:	Stable for 1 Year at -20.0°C from date of receipt.
Country of Origin:	U.S.A.
Intended Use:	For Research Use Only Not for Diagnostic or Therapeutic Use



Immunohistochemical staining of formalin fixed and paraffin embedded human tonsil tissue section using anti-CD5 rabbit monoclonal antibody (Clone RM354) at a 1:500 dilution.

Immunohistochemical staining of formalin fixed and paraffin embedded human colon cancer tissue section using anti-CD5 rabbit monoclonal antibody (Clone RM354) at a 1:1000 dilution.



Western Blot of Jurkat cells lysate using anti-CD5 rabbit monoclonal antibody (Clone RM354) at a 1:25000 dilution.