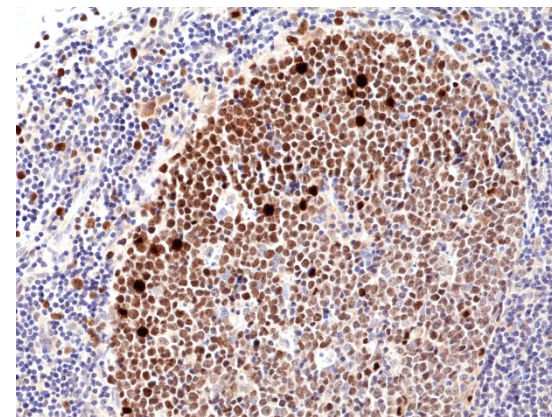


Certificate of Analysis

Product:	Rabbit Monoclonal Antibody Anti-Ki-67 Rabbit Monoclonal Antibody, Clone RM360
Catalog No.:	31-1246-00
Lot No.:	
Clone:	RM360
Specificity:	This antibody reacts to Human Antigen Ki-67.
Application:	Immunohistochemistry, Western Blot
Immunogen:	A peptide corresponding to the internal region of human Ki67
Purity:	Protein A affinity purified from an animal origin-free culture supernatant
Size:	100 µL
Buffer:	50% Glycerol/PBS with 1% BSA and 0.09% sodium azide
Usage:	IHC: 1:500 - 1:1000 dilution WB: 1:1000 – 1:2000 dilution
Storage and Stability:	Stable for 1 Year at -20.0°C from date of receipt
Country of Origin:	U.S.A.
Intended Use:	For Research Use Only Not for Diagnostic or Therapeutic Use



Immunohistochemical staining of formalin fixed and paraffin embedded human tonsil tissue sections, using anti-ki67 (RM360) rabbit monoclonal antibody (clone 360) at 1:1000 dilution.