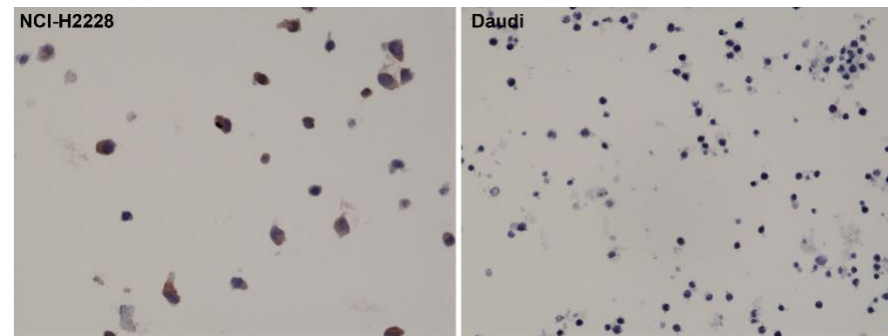
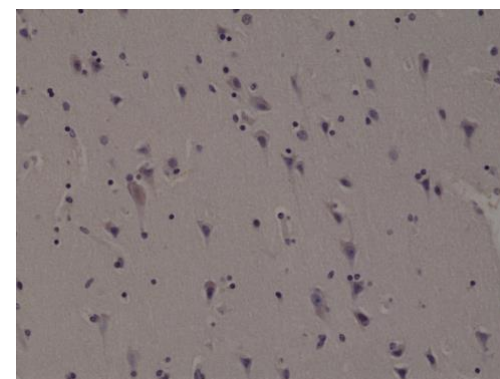


Certificate of Analysis

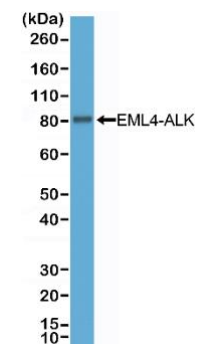
Product:	Rabbit Monoclonal Antibody Anti-ALK Rabbit Monoclonal Antibody, Clone RM361
Catalog No.:	31-1247-00
Lot No.:	
Clone:	RM361
Specificity:	This antibody reacts to human total ALK protein including ALK fusion proteins
Application:	Immunohistochemistry, Western Blot
Immunogen:	A peptide corresponding to the C-terminus of human ALK (Anaplastic lymphoma kinase)
Purity:	Protein A affinity purified from an animal origin-free culture supernatant
Size:	100 µL
Buffer:	50% Glycerol/PBS with 1% BSA and 0.09% sodium azide
Usage:	IHC: 1:500 -1:1000 dilution; WB: 1:1000 - 1:2000 dilution.
Storage and Stability:	Stable for 1 Year at -20.0°C from date of receipt.
Country of Origin:	U.S.A.
Intended Use:	For Research Use Only Not for Diagnostic or Therapeutic Use



Immunohistochemical staining of formalin fixed and paraffin embedded NCI-H2228 cells (expressing EML4-ALK variant 3) and Daudi cells (ALK negative), stained with anti-ALK rabbit monoclonal antibody clone RM361.



Immunohistochemical staining of formalin fixed and paraffin embedded human brain tissue section using anti-ALK rabbit monoclonal antibody (Clone RM361) at a 1:1000 dilution.



Western Blot of NSCLC cell line H2228 (Cell Lysate) expressing EML4-ALK variant 3, using anti-ALK rabbit monoclonal antibody (Clone RM361) at a 1:2000 dilution.