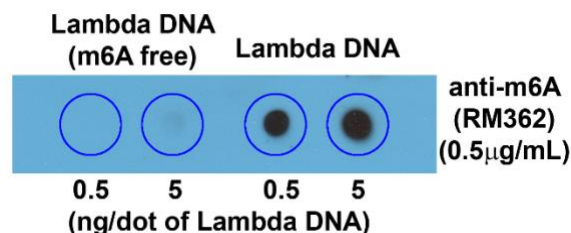
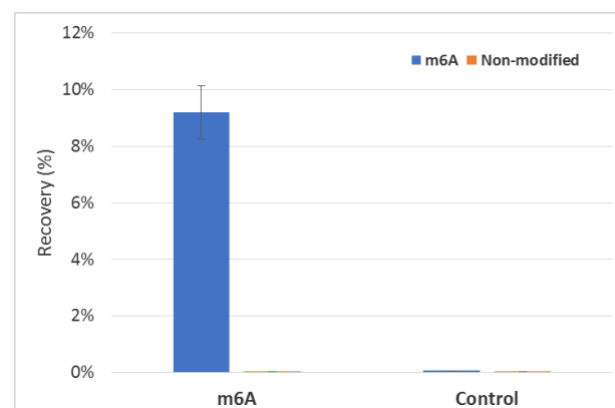


Certificate of Analysis

Product:	Rabbit Monoclonal Antibody Anti-N6-Methyladenosine (m6A) Rabbit Monoclonal Antibody, Clone RM362
Catalog No.:	31-1248-00
Lot No.:	
Clone	RM362
Specificity	This antibody reacts to N6-Methyladenosine (m6A) in both RNA and DNA. No cross reactivity with non-methylated adenosine.
Application:	MeRIP, ELISA, Dot Blot
Immunogen:	BSA-conjugated N6-Methyladenosine
Purity:	Protein A affinity purified from an animal origin-free culture supernatant
Size:	50 µg
Concentration:	1.0 mg/mL
Buffer:	50% Glycerol/PBS with 1% BSA and 0.09% sodium azide
Usage:	Dot Blot: 0.5 µg/mL - 2 µg/mL; ELISA: 0.1µg/mL - 3 µg/mL.; MeRIP: 0.2 µg/mL - 5 µg/mL.
Storage and Stability:	Stable for 1 Year at -20.0°C from date of receipt.
Country of Origin:	U.S.A.
Intended Use:	For Research Use Only Not for Diagnostic or Therapeutic Use



Dot blot of Lambda DNA without or with m6A, using anti-m6A antibody (RM362). The membrane was pre-spotted with 5, and 0.5 ng/dot of lambda DNA. m6A-free DNA was isolated from bacteriophage lambda grown in an *E. coli* host-deficient in adenine methylase (dam-).



MeRIP was performed using M6A and control RNA from NEB (E1610). Antibodies (Anti-m6A RM362 and Anti-PEG RM105) were mixed for a short time, with Protein A beads before the addition of m6A labelled and non-labelled RNA (in equal amounts). Captured RNA was then washed, eluted and run through RT-PCR. Resulting cDNA was then analyzed using Realtime PCR with specific probes to m6A labelled and un-labelled sequences.