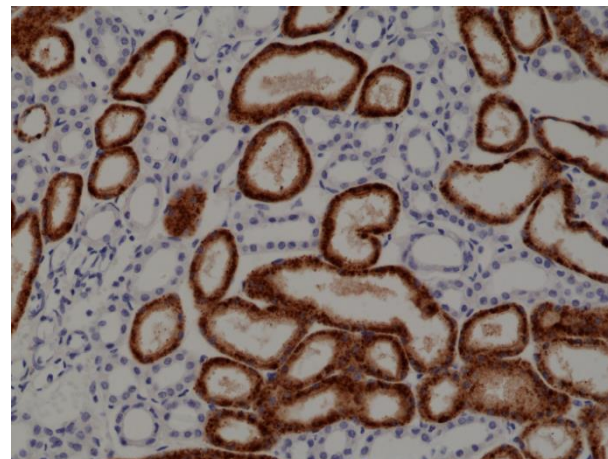


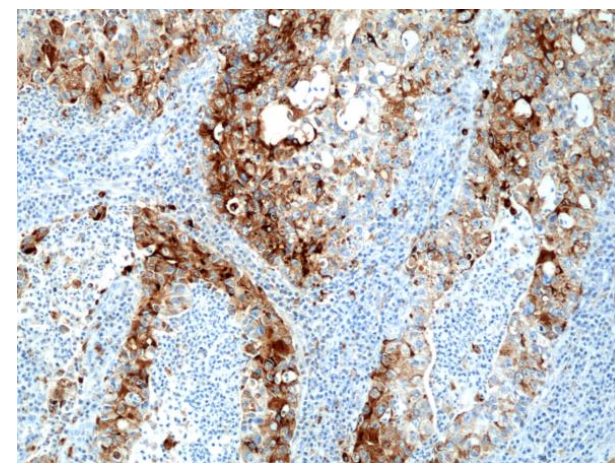
Certificate of Analysis

Product:	Rabbit Monoclonal Antibody Anti-Napsin-A Rabbit Monoclonal Antibody, Clone RM366
Catalog No.:	31-1252-00
Lot No.:	
Clone:	RM366
Specificity:	This antibody reacts human Napsin-A
Application:	Immunohistochemistry, Western Blot
Immunogen:	A peptide corresponding to the N-terminus of human Napsin-A
Purity:	Protein A affinity purified from an animal origin-free culture supernatant
Size:	100 µL
Buffer:	50% Glycerol/PBS with 1% BSA and 0.09% sodium azide
Usage:	IHC: 1:500 -1:2000 dilution; WB: 1:1000 - 1:2000 dilution.
Storage and Stability:	Stable for 1 Year at -20.0°C from date of receipt.
Country of Origin:	U.S.A.
Intended Use:	For Research Use Only Not for Diagnostic or Therapeutic Use



Immunohistochemical staining of formalin fixed and paraffin embedded human kidney tissue section using anti-Napsin-A rabbit monoclonal antibody (Clone RM366) at a 1:1000 dilution.

Immunohistochemical staining of formalin fixed and paraffin embedded human lung adenocarcinoma tissue section using anti-Napsin-A rabbit monoclonal antibody (Clone RM366) at a 1:2000 dilution.



Western Blot of human lung tissue lysate using anti-Napsin-A rabbit monoclonal antibody (Clone RM366) at a 1:2000 dilution.