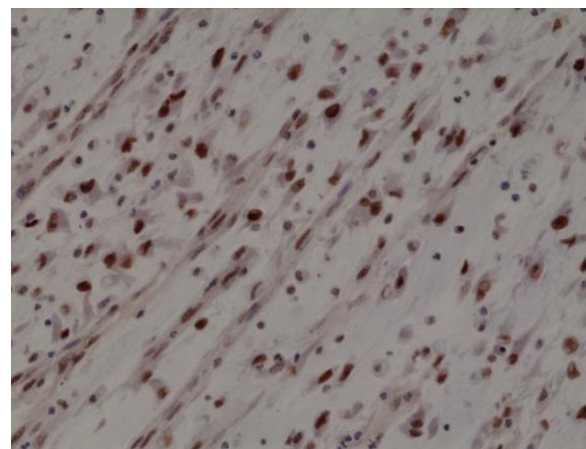
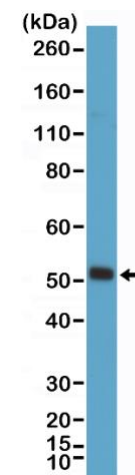


Certificate of Analysis

Product:	Rabbit Monoclonal Antibody Anti-MyoD1 Rabbit Monoclonal Antibody, Clone RM369
Catalog No.:	31-1255-00
Lot No.:	
Clone:	RM369
Specificity:	This antibody reacts to human, mouse, and rat MyoD1 (Myoblast determination protein 1)
Application:	Immunohistochemistry, Western Blot
Immunogen:	A peptide corresponding to residues near the N-terminus of human MyoD1 (Myoblast determination protein 1)
Purity:	Protein A affinity purified from an animal origin-free culture supernatant
Size:	100 µL
Buffer:	50% Glycerol/PBS with 1% BSA and 0.09% sodium azide
Usage:	IHC: 1:500 -1:1000 dilution; WB: 1:1000 - 1:2000 dilution.
Storage and Stability:	Stable for 1 Year at -20.0°C from date of receipt.
Country of Origin:	U.S.A.
Intended Use:	For Research Use Only Not for Diagnostic or Therapeutic Use



Immunohistochemical staining of formalin fixed and paraffin embedded human Rhabdomyosarcoma section using anti-MyoD1 rabbit monoclonal antibody (Clone RM369) at a 1:1000 dilution.



Western Blot of mouse skeletal muscle tissue lysate using anti-MyoD1 rabbit monoclonal antibody (Clone RM369) at a 1:2000 dilution.