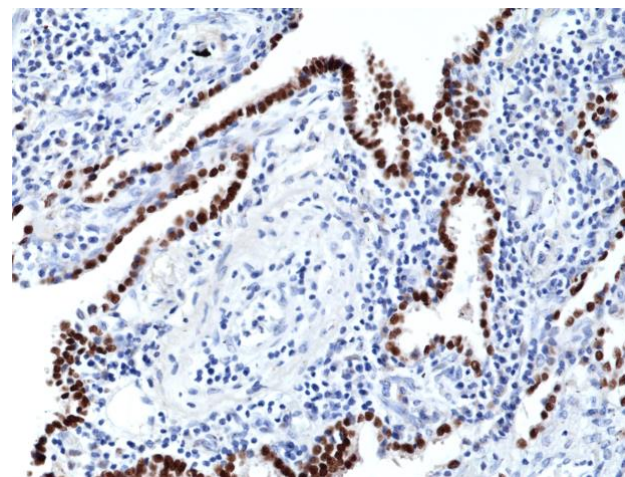
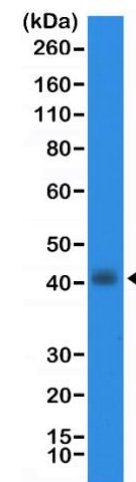


Certificate of Analysis

Product:	Rabbit Monoclonal Antibody Anti-TTF1 (Thyroid transcription factor 1) Rabbit Monoclonal Antibody, Clone RM373
Catalog No.:	31-1259-00
Lot No.:	
Clone:	RM373
Specificity:	This antibody reacts to human TTF1 (Thyroid transcription factor 1) (Homeobox protein Nkx-2.1). It may also react to mouse and rat TTF1, as predicted by immunogen homology.
Application:	Immunohistochemistry, Western Blot
Immunogen:	A peptide corresponding to the N-terminus of human TTF1 (Thyroid transcription factor 1) (Homeobox protein Nkx-2.1)
Purity:	Protein A affinity purified from an animal origin-free culture supernatant
Size:	100 µL
Buffer:	50% Glycerol/PBS with 1% BSA and 0.09% sodium azide
Usage:	IHC: 1:500 -1:1000 dilution; WB: 1:1000 - 1:20000 dilution.
Storage and Stability:	Stable for 1 Year at -20.0°C from date of receipt.
Country of Origin:	U.S.A.
Intended Use:	For Research Use Only Not for Diagnostic or Therapeutic Use



Immunohistochemical staining of formalin fixed and paraffin embedded human lung cancer tissue section using anti-TTF1 rabbit monoclonal antibody (Clone RM373) at a 1:500 dilution.



Western Blot of TT cell lysate using anti-TTF1 rabbit monoclonal antibody (Clone RM373) at a 1:20000 dilution.