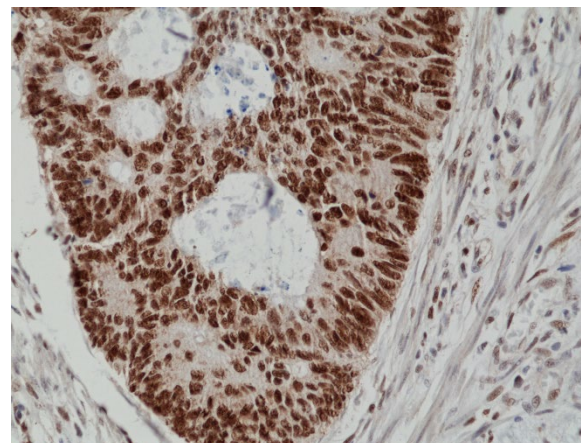
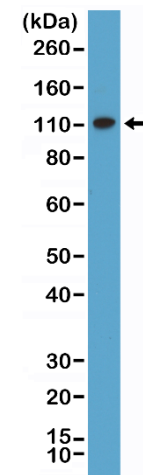


Certificate of Analysis

Product:	Rabbit Monoclonal Antibody Anti-MSH2 Rabbit Monoclonal Antibody, Clone RM375
Catalog No.:	31-1261-00
Lot No.:	
Clone:	RM375
Specificity:	This antibody reacts to human DNA mismatch repair protein MSH2
Application:	Immunohistochemistry, Western Blot
Immunogen:	Mammalian cell expressed recombinant protein fragment within 500 amino acids of the N-terminus of human MSH2
Purity:	Protein A affinity purified from an animal origin-free culture supernatant
Size:	100 µL
Buffer:	50% Glycerol/PBS with 1% BSA and 0.09% sodium azide
Usage:	IHC: 1:200 -1:1000 dilution; WB: 1:400 - 1:2000 dilution.
Storage and Stability:	Stable for 1 Year at -20.0°C from date of receipt.
Country of Origin:	U.S.A.
Intended Use:	For Research Use Only Not for Diagnostic or Therapeutic Use



Immunohistochemical staining of formalin fixed and paraffin embedded human colon cancer tissue section using anti-MSH2 rabbit monoclonal antibody (Clone RM375) at a 1:100 dilution.



Western Blot of HeLa lysate using anti-MSH2 rabbit monoclonal antibody (Clone RM375) at a 1:500 dilution.