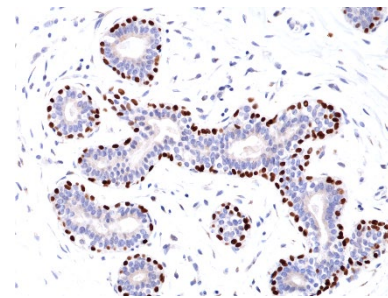
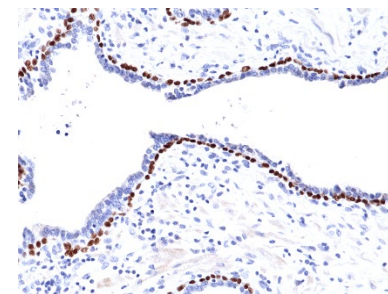


Certificate of Analysis

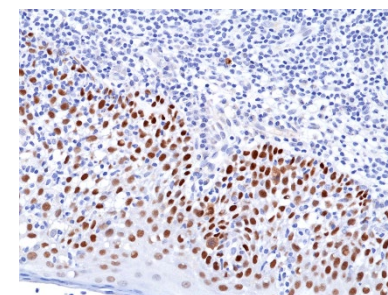
Product:	Rabbit Monoclonal Antibody Anti-p63 (Tumor protein 63) Rabbit Monoclonal Antibody, Clone RM383
Catalog No.:	31-1269-00
Lot No.:	
Clone:	RM383
Specificity:	This antibody reacts to human p63 (Tumor protein 63).
Application:	Immunohistochemistry, Western Blot
Immunogen:	A peptide corresponding to the area surrounding the C-terminus of human p63 (Tumor protein 63).
Purity:	Protein A affinity purified from an animal origin-free culture supernatant
Size:	100 µL
Buffer:	50% Glycerol/PBS with 1% BSA and 0.09% sodium azide
Usage:	IHC: 1:100 -1:200 dilution; WB: 1:500 - 1:1000 dilution.
Storage and Stability:	Stable for 1 Year at -20.0°C from date of receipt.
Country of Origin:	U.S.A.
Intended Use:	For Research Use Only Not for Diagnostic or Therapeutic Use



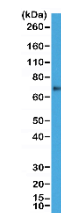
Immunohistochemical staining of formalin fixed and paraffin embedded human breast tissue section using anti-p63 rabbit monoclonal antibody (Clone RM383) at 1:100 dilution.



Immunohistochemical staining of formalin fixed and paraffin embedded human prostate tissue section using anti-p63 rabbit monoclonal antibody (Clone RM383) at 1:100 dilution.



Immunohistochemical staining of formalin fixed and paraffin embedded human Tonsil tissue section using anti-p63 rabbit monoclonal antibody (Clone RM383) at 1:100 dilution.



Western Blot of A431 cell lysate using anti-p63 rabbit monoclonal antibody (Clone RM383) at a 1:1000 dilution.