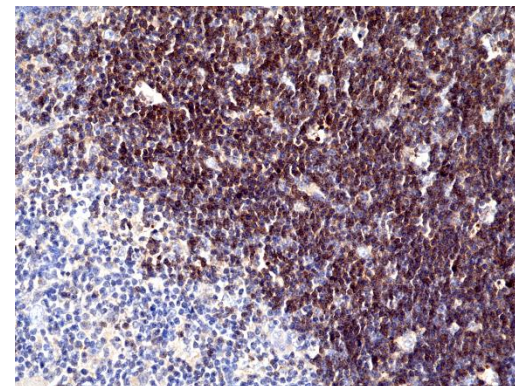
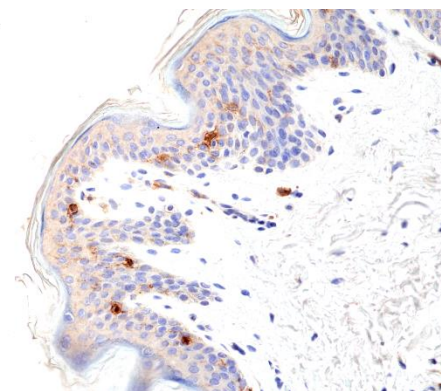


Certificate of Analysis

Product:	Rabbit Monoclonal Antibody Anti-CD1a Rabbit Monoclonal Antibody, Clone RM393
Catalog No.:	31-1279-00
Lot No.:	
Clone:	RM393
Specificity:	This antibody reacts human CD1a
Application:	Immunohistochemistry
Immunogen:	A peptide corresponding to the N-terminus of human CD1a
Purity:	Protein A affinity purified from an animal origin-free culture supernatant
Size:	100 µL
Buffer:	50% Glycerol/PBS with 1% BSA and 0.09% sodium azide
Usage:	IHC: 1:100 -1:200 dilution
Storage and Stability:	Stable for 1 Year at -20.0°C from date of receipt.
Country of Origin:	U.S.A.
Intended Use:	For Research Use Only Not for Diagnostic or Therapeutic Use



Immunohistochemical staining of formalin fixed and paraffin embedded human thymus tissue section using anti-CD1a rabbit monoclonal antibody (Clone RM393) at a 1:100 dilution.



Immunohistochemical staining of formalin fixed and paraffin embedded human skin tissue section using anti-CD1a rabbit monoclonal antibody (Clone RM393) at a 1:100 dilution.