

Certificate of Analysis

Product:	Rabbit Monoclonal Antibody Anti-EGFRvIII (Epidermal Growth Factor Receptor Variant III) Rabbit Monoclonal Antibody, Clone RM419
Catalog No.:	31-1305-00
Lot No.:	
Clone:	RM419
Specificity:	This antibody reacts to epidermal growth factor receptor variant III (EGFRvIII). No cross reactivity with wild type EGF receptor.
Application:	Immunohistochemistry, Flow Cytometry, Western Blot, ELISA
Immunogen:	A peptide corresponding to epidermal growth factor receptor variant III (EGFRvIII)
Purity:	Protein A affinity purified from an animal origin-free culture supernatant.
Size:	100 µL
Buffer:	50% Glycerol/PBS with 1% BSA and 0.09% sodium azide
Usage:	IHC: 1:100 – 1:200 dilution; FC: 1:10 – 1:100 dilution; WB: 1:1000 - 1:2000 dilution; ELISA: 1:100 – 1:1000 dilution.
Storage and Stability:	Stable for 1 Year at -20.0°C from date of receipt.
Country of Origin:	U.S.A.
Intended Use:	For Research Use Only Not for Diagnostic or Therapeutic Use

Ordering and Technical Support:



(0)40 45 06 70 | order@dianova.de
www.dianova.com

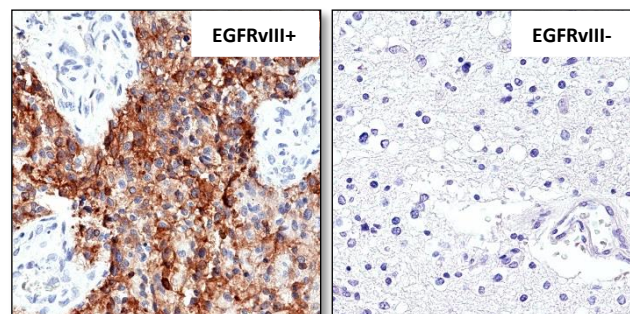


Fig 1. Immunohistochemical staining of formalin fixed and paraffin embedded human Glioblastoma Multiforme tissue sections with or without EGFRvIII using anti-EGFRvIII antibody (RM419) at 1:100 dilution.

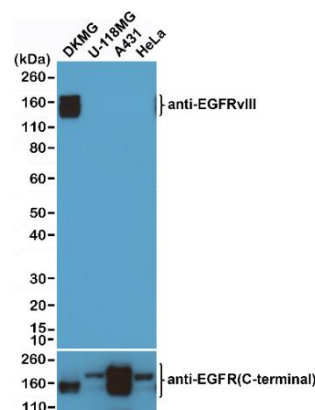


Fig 2. Western Blot analysis of DKMG, U118MG (EGFRvIII positive), A431, and HeLa whole cell lysates, using anti-EGFRvIII antibody (RM419) and anti-EGFRct (RM294) at 1:1:1000 dilution.

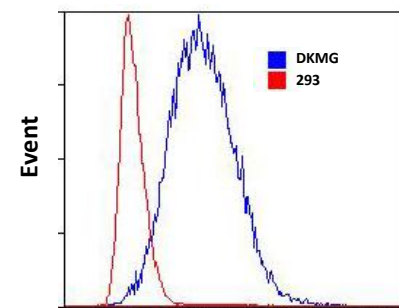


Fig 3. Flow cytometry analysis of DKMG and 293 cells, using anti-EGFRvIII antibody (RM419) at 1:50 dilution.

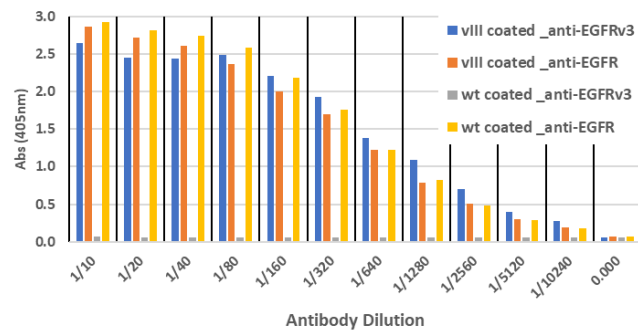


Fig 4. ELISA analysis showing RM419 does not react to wild type EGFR protein. The plate was coated with recombinant EGFR variant III and EGFRwt proteins. A serial dilution of anti-EGFRvIII (RM419) or anti-EGFR (RM229) antibodies were used.