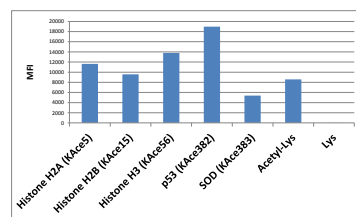
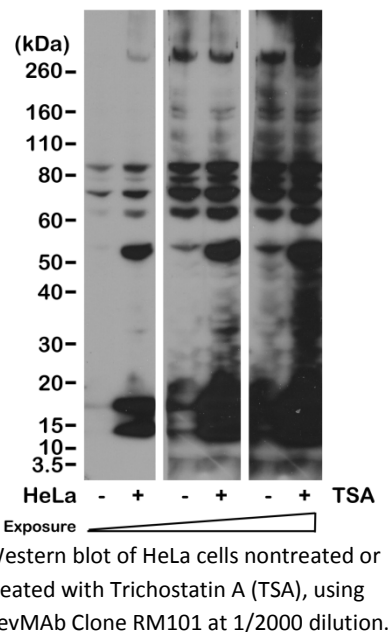
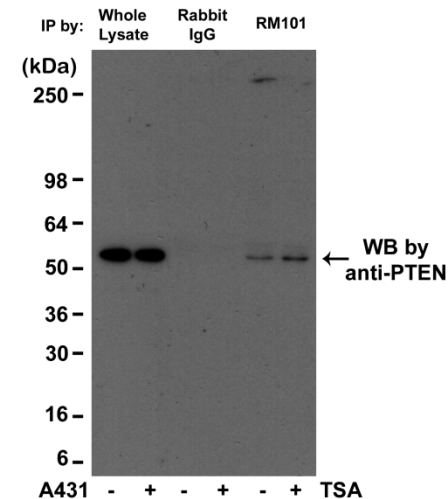


Certificate of Analysis

Product:	Rabbit Monoclonal Antibody Anti-Acetylated Lysine Rabbit Monoclonal Antibody, Clone RM101
Catalog No.:	32-1012-00
Lot No.:	
Clone	RM101
Specificity	This antibody reacts to lysine-acetylated proteins. No cross reactivity with nonacetylated lysine, or lysines with other modifications.
Application:	Western Blot, Immunoprecipitation, Immunocytochemistry, Immunohistochemistry, Flow Cytometry, ELISA
Immunogen:	Acetyllysine-BSA
Purity:	Protein A affinity purified from an animal origin-free and protein-free culture supernatant
Size:	100 µg
Concentration:	1.0 mg/mL
Buffer:	50% Glycerol/PBS with 1% BSA and 0.09% sodium azide
Usage:	WB: 1:500 -1:2000 dilution; IP, ChIP: 1:100 -1:500 dilution; ICC, IHC: 1:100 -1:500 dilution.
Storage and Stability:	Stable for 1 Year at -20.0°C from date of receipt
Country of Origin:	U.S.A.
Intended Use:	For Research Use Only Not for Diagnostic or Therapeutic Use



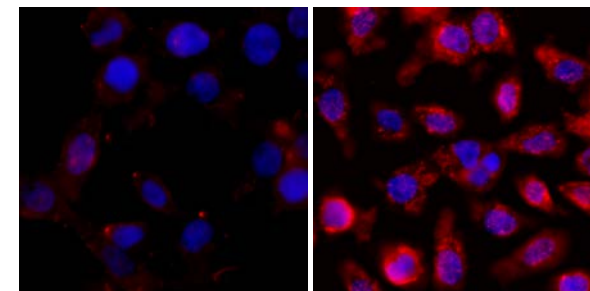
RevMAB rabbit monoclonal antibody clone RM101 recognizes acetylated lysine in peptides with different sequences. It does not react with non-acetylated lysine.



Immunoprecipitation of A431 cell lysates, using RevMAB clone RM101 at 1/500 dilution, was blotted with anti-PTEN mouse monoclonal antibody.

A431 Control

A431 + TSA



Immunocytochemistry of A431 cells nontreated or treated with Trichostatin A (TSA), using RevMAB Clone RM101 at 1/500 dilution (followed by a PE conjugated secondary antibody, red) and DAPI (blue).