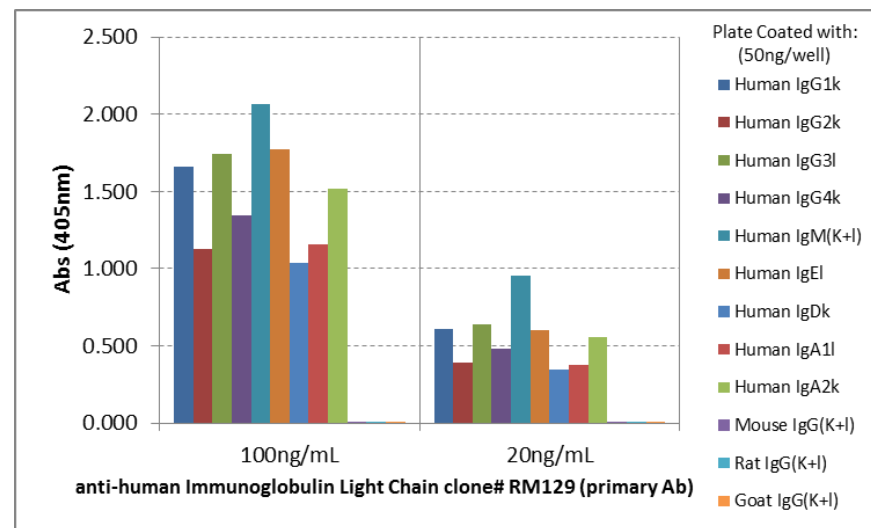
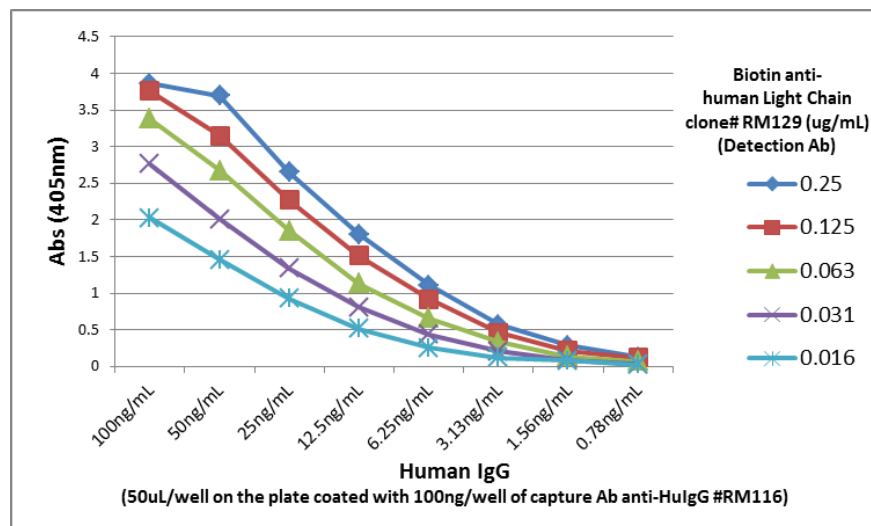


Certificate of Analysis

Product:	Rabbit Monoclonal Antibody Biotin Anti-Human Immunoglobulin Light Chains Rabbit Monoclonal Antibody, Clone RM129
Catalog No.:	32-1031-02
Lot No.:	
Clone	RM129
Specificity	This antibody reacts to both kappa and lambda light chains of human immunoglobulins. No cross reactivity with mouse, rat, or goat immunoglobulin light chain.
Application:	ELISA, Immunohistochemistry, Immunocytochemistry, Flow Cytometry.
Immunogen:	Human IgG
Purity:	Protein A affinity purified from an animal origin-free culture supernatant
Size:	50 µg
Concentration:	1.0 mg/mL
Buffer:	50% Glycerol/PBS with 1% BSA and 0.09% sodium azide
Usage:	ELISA: 0.02ug/mL – 0.25ug/mL; IHC, ICC: 0.5ug/mL – 2ug/mL;
Storage and Stability:	Stable for 1 Year at -20.0°C from date of receipt.
Country of Origin:	U.S.A.
Intended Use:	For Research Use Only Not for Diagnostic or Therapeutic Use



ELISA of human immunoglobulins shows RM129 reacts to both kappa and lambda light chains of human immunoglobulins. No cross reactivity with mouse, rat, or goat immunoglobulin light chain. The plate was coated with 50 ng/well of different immunoglobulins. 100 ng/mL or 20 ng/mL of RM129 was used as the primary antibody. An alkaline phosphatase conjugated anti-rabbit IgG as the secondary antibody.



A titer Sandwich ELISA using Biotinylated RM129 as the detection antibody. The plate, coated with the capture antibody anti-human IgG RM116, was loaded with different amounts of human IgG. A serial dilution of Biotin RM129 was used as the detection antibody, followed with an alkaline phosphatase conjugated streptavidin.