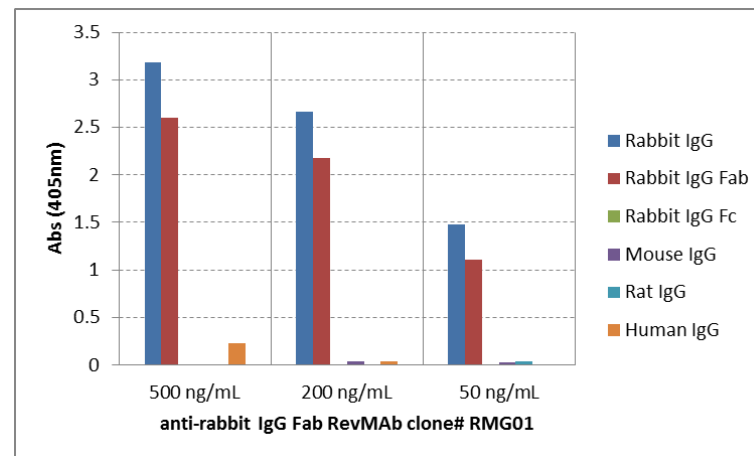
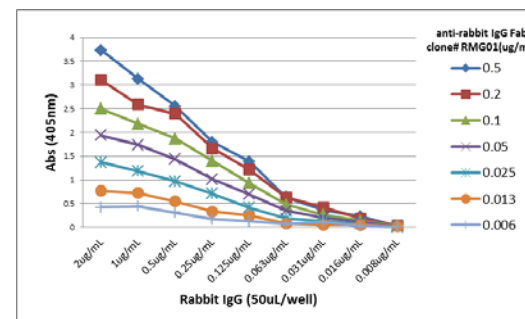


## Certificate of Analysis

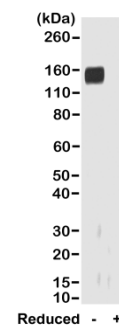
<b>Product:</b>	Goat Monoclonal Antibody Anti-Rabbit IgG Fab Goat Monoclonal Antibody, Clone RMG01
<b>Catalog No.:</b>	41-1014-00
<b>Lot No.:</b>	
<b>Clone</b>	RMG01
<b>Specificity</b>	This antibody reacts to the Fab region of Rabbit IgG. No cross reactivity with human IgG, rat IgG, or mouse IgG.
<b>Application:</b>	ELISA, Flow Cytometry, Immunocytochemistry, Immunohistochemistry, Immunoprecipitation, Western Blot (nonreduced).
<b>Immunogen:</b>	Rabbit IgG
<b>Purity:</b>	Protein G affinity purified from an animal origin-free culture supernatant
<b>Size:</b>	100 µg
<b>Concentration:</b>	1.0 mg/mL
<b>Buffer:</b>	50% Glycerol/PBS with 1% BSA and 0.09% sodium azide
<b>Usage:</b>	ELISA: 0.01µg/mL – 0.5µg/mL; ICC, IHC: 0.5µg/mL – 2µg/mL; WB: 0.1µg/mL – 0.5µg/mL
<b>Storage and Stability:</b>	Stable for 1 Year at -20.0°C from date of receipt.
<b>Country of Origin:</b>	U.S.A.
<b>Intended Use:</b>	<b>For Research Use Only Not for Diagnostic or Therapeutic Use</b>



ELISA of IgGs from different species, shows RMG01 reacts to the Fab region of rabbit IgG; no cross reactivity with human IgG, rat IgG, or mouse IgG. The plate was coated with 50 ng/well of different IgG. 500 ng/mL, 200 ng/mL, or 50 ng/mL of RMG01 was used as the primary antibody. An alkaline phosphatase conjugated anti-goat IgG as the secondary antibody.



A titer ELISA of rabbit IgG. The plate was coated with different amounts of rabbit IgG. A serial dilution of RMG01 was used as the primary antibody. An alkaline phosphatase conjugated anti-goat IgG as the secondary antibody.



Western blot of nonreduced(-) and reduced(+) rabbit IgG (20ng/lane), using 0.2µg/mL of RevMAB clone RMG01. This antibody reacts to nonreduced rabbit IgG (~150 kDa).