

Beratung und Vertrieb

Fon + 49 (0) 40 45 067 0

dianova

Fax + 49 (0) 40 450 67 490

info@dianova.de

Waburgstr. 45 • 20354 Hamburg

www.dianova.de

Product: Goat Monoclonal Antibody
Biotin Anti-Rabbit IgG Fab Goat Monoclonal Antibody,
Clone RMG01

Catalog No.: 41-1014-02

Lot No.:

Clone RMG01

Specificity This antibody reacts to the Fab region of Rabbit IgG. No cross reactivity with human IgG, rat IgG, or mouse IgG.

Application: ELISA, Flow Cytometry, Immunocytochemistry, Immunohistochemistry, Immunoprecipitation, Western Blot (nonreduced).

Immunogen: Rabbit IgG

Purity: Protein G affinity purified from an animal origin-free culture supernatant

Size: 50 µg

Concentration: 1.0 mg/mL

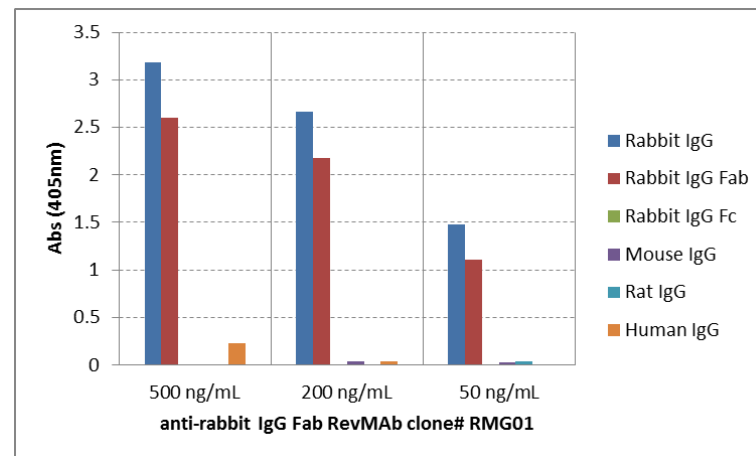
Buffer: 50% Glycerol/PBS with 1% BSA and 0.09% sodium azide

Usage: ELISA: 0.01µg/mL – 0.5µg/mL;
ICC, IHC: 0.5µg/mL – 2µg/mL;
WB: 0.1µg/mL – 0.5µg/mL

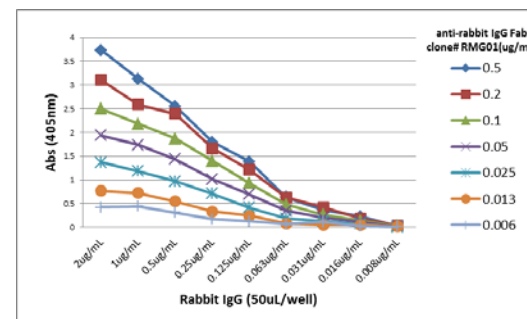
Storage and Stability: Stable for 1 Year at -20.0°C from date of receipt.

Country of Origin: U.S.A.

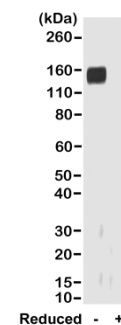
Intended Use: For Research Use Only Not for Diagnostic or Therapeutic Use



ELISA of IgGs from different species, shows RMG01 reacts to the Fab region of rabbit IgG; no cross reactivity with human IgG, rat IgG, or mouse IgG. The plate was coated with 50 ng/well of different IgG. 500 ng/mL, 200 ng/mL, or 50 ng/mL of RMG01 was used as the primary antibody. An alkaline phosphatase conjugated anti-goat IgG as the secondary antibody.



A titer ELISA of rabbit IgG. The plate was coated with different amounts of rabbit IgG. A serial dilution of RMG01 was used as the primary antibody. An alkaline phosphatase conjugated anti-goat IgG as the secondary antibody.



Western blot of nonreduced(-) and reduced(+) rabbit IgG (20ng/lane), using 0.2µg/mL of RevMAB clone RMG01. This antibody reacts to nonreduced rabbit IgG (~150 kDa).