

Beratung und Vertrieb

Fon + 49 (0) 40 45 067 0

**dianova**

Fax + 49 (0) 40 450 67 490

info@dianova.de

Warburgstr. 45 • 20354 Hamburg

www.dianova.de

**Product:** Goat Monoclonal Antibody

Biotin Anti-Rabbit IgG Fc Goat Monoclonal Antibody,  
Clone RMG02

**Catalog No.:** 41-1015-02

**Lot No.:**

**Clone** RMG02

**Specificity** This antibody reacts to the Fc region of Rabbit IgG. No cross reactivity with human IgG, rat IgG, or mouse IgG.

**Application:** ELISA, Flow Cytometry, Immunocytochemistry, Immunohistochemistry, Immunoprecipitation, Western Blot(nonreduced).

**Immunogen:** Rabbit IgG

**Purity:** Protein G affinity purified from an animal origin-free culture supernatant

**Size:** 50 µg

**Concentration:** 1.0 mg/mL

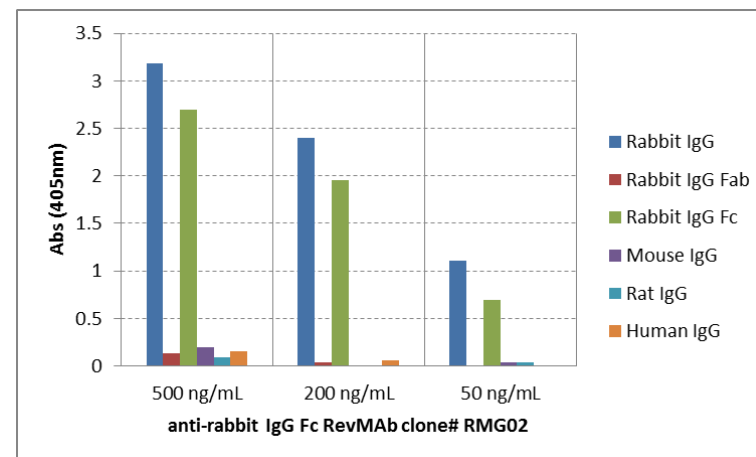
**Buffer:** 50% Glycerol/PBS with 1% BSA and 0.09% sodium azide

**Usage:** ELISA: 0.01µg/mL – 0.5µg/mL;  
ICC, IHC: 0.5µg/mL – 2µg/mL;  
WB: 0.1µg/mL – 0.5µg/mL

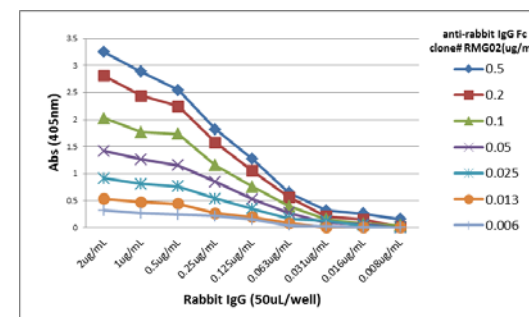
**Storage:** Stable for 1 Year at -20.0°C from date of receipt.

**Country of Origin:** U.S.A.

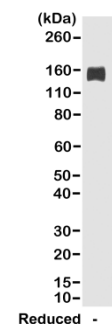
**Intended Use:** For Research Use Only Not for Diagnostic or Therapeutic Use



ELISA of IgGs from different species shows RMG02 reacts to the Fc region of rabbit IgG; no cross reactivity with human IgG, rat IgG, or mouse IgG. The plate was coated with 50 ng/well of different IgG. 500 ng/mL, 200 ng/mL, or 50 ng/mL of RMG02 was used as the primary antibody. An alkaline phosphatase conjugated anti-goat IgG as the secondary antibody.



A titer ELISA of rabbit IgG. The plate was coated with different amounts of rabbit IgG. A serial dilution of RMG02 was used as the primary antibody. An alkaline phosphatase conjugated anti-goat IgG as the secondary antibody.



Western blot of nonreduced(-) and reduced(+) rabbit IgG (20ng/lane), using 0.2µg/mL of RevMAb clone RMG02. This antibody reacts to nonreduced rabbit IgG (~150 kDa).