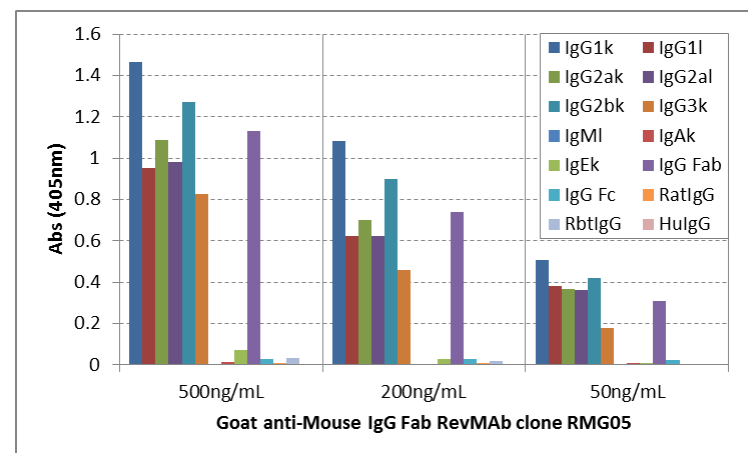
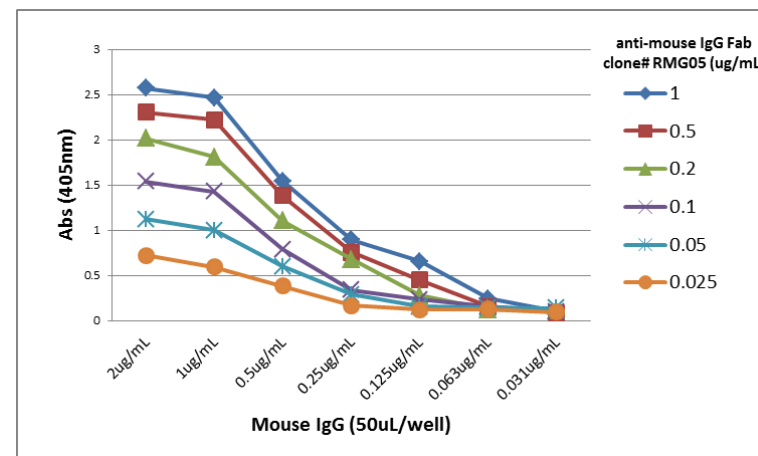


Certificate of Analysis

Product:	Goat Monoclonal Antibody Anti-Mouse IgG Fab, Clone RMG05
Catalog No.:	41-1043-00
Lot No.:	
Clone	RMG05
Specificity	This antibody reacts to the Fab region of Mouse IgG, including IgG1, IgG2a, IgG2b, and IgG3. No cross reactivity with IgM, IgA, IgE, human IgG, rat IgG, or rabbit IgG.
Application:	ELISA, Flow Cytometry, Immunocytochemistry, Immunohistochemistry, Immunoprecipitation.
Immunogen:	Mouse IgG
Purity:	Protein G affinity purified from an animal origin-free culture supernatant
Size:	100 µg
Concentration:	1 mg/mL
Buffer:	50% Glycerol/PBS with 1% BSA and 0.09% sodium azide
Usage:	ELISA: 0.05ug/mL – 1ug/mL; ICC, IHC: 0.5ug/mL – 2ug/mL.
Storage and Stability:	Stable for 1 Year at -20.0°C from date of receipt.
Country of Origin:	U.S.A.
Intended Use:	For Research Use Only Not for Diagnostic or Therapeutic Use



ELISA of mouse immunoglobulins shows RMG05 reacts to the Fab region of mouse IgG1, IgG2a, IgG2b, and IgG3; no cross reactivity with IgM, IgA, IgE, human IgG, rat IgG, and rabbit IgG. The plate was coated with 50 ng/well of different immunoglobulins. 500 ng/mL, 200 ng/mL, or 50 ng/mL of RMG05 was used as the primary antibody. An alkaline phosphatase conjugated anti-goat IgG as the secondary antibody.



A titer ELISA of mouse IgG. The plate was coated with different amounts of mouse IgG. A serial dilution of RMG05 was used as the primary antibody. An alkaline phosphatase conjugated anti-goat IgG as the secondary antibody.