



<b>Instructions For Use</b>		
<b>LBC-1-IFU</b>		
Rev. Date: Feb. 11, 2012	Revision: 3	Page 1 of 2

P.O. Box 3286 - Logan, Utah 84323, U.S.A. - Tel. (800) 729-8350 – Tel. (435) 755-9848 - Fax (435) 755-0015 - [www.scytek.com](http://www.scytek.com)

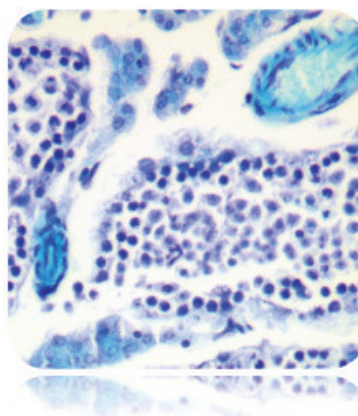
## Luxol Fast Blue Stain Kit

**Description:** The Luxol Fast Blue Stain Kit is designed for staining myelin/myelinated axons and Nissil substance on formalin fixed, paraffin-embedded tissue as well as frozen tissue. This product is used for identifying the basic neuronal structure in brain or spinal cord sections.

Myelinated Fibers:	Blue
Nissil Substance:	Violet
Nerve Cells:	Violet

**Uses/Limitations:** Not to be taken internally.  
 For In-Vitro Diagnostic use only.  
 Histological applications.  
 Do not use if reagents become cloudy.  
 Do not use past expiration date.  
 Use caution when handling reagents.  
 Non-Sterile.

**Control Tissue:** Cerebral Cortex  
 Spinal Cord



**Ordering information regarding individual components on back page!**


**Kit Contents:**

<u>Item #</u>	<u>Kit Contents</u>	<u>Volume</u>	<u>Storage</u>
CEA125	Cresyl Echt Violet Solution	125 ml	2-8 °C
LFB125	Luxol Fast Blue Solution	125 ml	18-25 °C
LCQ500	Lithium Carbonate Solution (0.05%)	500 ml	18-25 °C
EAS500	Alcohol, Reagent (70%)	500 ml	18-25 °C

**Precautions:** Avoid contact with skin and eyes.  
 Harmful if swallowed.  
 Follow all Federal, State, and local regulations regarding disposal.

Storage: 2° C  25° C   
**Mixed Storage Conditions.**  
**Separate Contents.**

Doc: IFU-TemplateMixedStoragerev2

 ScyTek Laboratories, Inc.  
 205 South 600 West  
 Logan, UT 84321  
 U.S.A.



 EmergoEurope (31)(0) 70 345-8570  
 Molsnstraat 15  
 2513 BH Hague, The Netherlands

**Procedure:**

1. Deparaffinize sections if necessary and hydrate to distilled water.
2. Incubate slide in Luxol Fast Blue Solution for 24 hours at room temperature or 2 hours at 60 °C.
3. Rinse thoroughly in distilled water.
4. Differentiate section by dipping in Lithium Carbonate Solution (0.05%) several times (up to 20 seconds).
5. Continue differentiation by repeatedly dipping in Alcohol, Reagent (70%) until gray-matter is colorless and white-matter remains blue.
6. Rinse slide in 2 changes of distilled water.
7. Incubate slide in Cresyl Echt Violet (0.1%) for 2-5 minutes.
8. Rinse quickly in 1 change of distilled water.
9. Dehydrate quickly in 3 changes of absolute alcohol.
10. Clear as desired and mount in synthetic resin.

**References:**

1. Sheenan, D.C., Hrapchak, B.B. Theory and Practice of Histotechnology, 2<sup>nd</sup> Edition. Battelle Press, Columbus, OH. Page 262-264. 1980
2. Kluver, H., Barrera, E.A. A Method for the combined staining of cells and fibers in the nervous system. Journal of Neuropathology and Experimental Neurology, 1953, 12: pages 400-403.

**Bulk Reagent Ordering Information and Current Pricing at [www.scytek.com](http://www.scytek.com)**

Description:	Catalog #	Volume
Cresyl Echt Violet Solution	CEA125	125 ml
	CEA500	500 ml
	CEA999	1000 ml
Luxol Fast Blue Solution	LFB125	125 ml
	LFB500	500 ml
	LFB999	1000 ml
Lithium Carbonate Solution (0.05%)	LCQ500	500 ml
	LCQ999	1000 ml
Alcohol, Reagent (70%)	EAS500	500 ml
	EAS999	1000 ml

Storage: 2° C



25° C



ScyTek Laboratories, Inc.  
205 South 600 West  
Logan, UT 84321  
U.S.A.



EmergoEurope (31)(0) 70 345-8570  
Molsstraat 15  
2513 BH Hague, The Netherlands

**Mixed Storage Conditions.  
Separate Contents.**

Doc: IFU-TemplateMixedStoragerev2