



Instructions For Use MBS-IFU

Rev. Date: Aug. 24, 2012

Revision: 3

Page 1 of 2

P.O. Box 3286 - Logan, Utah 84323, U.S.A. - Tel. (800) 729-8350 – Tel. (435) 755-9848 - Fax (435) 755-0015 - www.scytek.com

Methylene Blue Solution

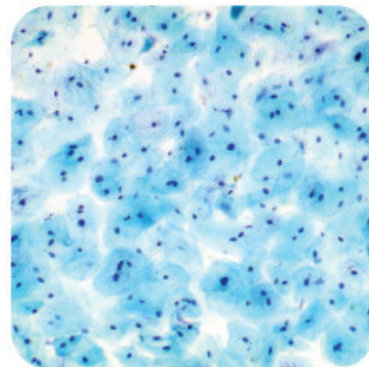
Description:

Methylene Blue Solution has been optimized in our research laboratories to give outstanding results when used in various procedures such as the Ziehl-Neelsen, Fite's, and Gram stain. The stain is also suggested for use in staining a variety of bacteria (Corynebacterium diphtheria, Haemophilus influenzae, Neisseria, etc.) and leukocytes. This reagent produces dark blue nuclei with very light blue cytoplasm.

Nuclei:	Dark Blue
Cytoplasm:	Light Blue
Corynebacterium Diphtheria:	Blue Granules
Escherichia Coli:	Blue Rods
Streptococcus Pyogenes:	Blue Cocci

Uses/Limitations:

Not to be taken internally.
For In-Vitro Diagnostic use only.
Histological applications.
Do not use if reagents become cloudy.
Do not use past expiration date.
Use caution when handling reagents.
Non-Sterile.



Control Tissue:

Cytology Smear.
Mucus Smear.
Fecal Smear.

Ordering Information and Current Pricing at www.scytek.com

Availability:	Item #	Volume
	MBS125	125 ml
	MBS500	500 ml
	MBS999	1000 ml

Storage: 18-25°C.

Precautions:

Avoid contact with skin and eyes.
Harmful if swallowed.
Follow all Federal, State, and local regulations regarding disposal.

Storage: 18° C



25° C



ScyTek Laboratories, Inc.
205 South 600 West
Logan, UT 84321
U.S.A.



 EmergoEurope (31)(0) 70 345-8570
Molsstraat 15
2513 BH Hague, The Netherlands

Instructions For Use
MBS-IFU

Rev. Date: Aug. 24, 2012

Revision: 3

Page 2 of 2

P.O. Box 3286 - Logan, Utah 84323, U.S.A. - Tel. (800) 729-8350 – Tel. (435) 755-9848 - Fax (435) 755-0015 - www.scytek.com

Procedure:

1. Deparaffinize sections if necessary and hydrate to distilled water.
2. Apply adequate Methylene Blue Solution to completely cover tissue section and incubate for 1-3 minutes.
3. Rinse slide using absolute alcohol.
4. Dehydrate in 2 changes of absolute alcohol.
5. Clear, and mount in synthetic resin.

Alternative: After staining, rinse briefly in distilled water (2-3 dips), allow slide to air dry, clear in xylene or xylene replacement, and mount in synthetic resin.

References:

1. Clark G., et al. Staining Procedures, 4th Edition. Williams & Wilkins, Baltimore, MD. Pages 380-381, 1981.
2. Misra, V., Misra, S.P., Dwivedi, M., Gupta, S.C. The Loeffler's methylene blue stain: an inexpensive and rapid method for detection of *Helicobacter pylori*. Journal of Gastroenterology and Hepatology. Sept.-Oct. 1994, volume 9(5): pages 512-513.

Storage: 18° C



25° C



ScyTek Laboratories, Inc.
205 South 600 West
Logan, UT 84321
U.S.A.



EC REP EmergoEurope (31)(0) 70 345-8570
Molsstraat 15
2513 BH Hague, The Netherlands