



Instructions For Use PAP-2-IFU

Rev. Date: June 29, 2012

Revision: 1

Page 1 of 2

P.O. Box 3286 - Logan, Utah 84323, U.S.A. - Tel. (800) 729-8350 – Tel. (435) 755-9848 - Fax (435) 755-0015 - www.scytek.com

Papanicolaou (PAP) Stain Kit

Description:

The Papanicolaou (PAP) Stain Kit is designed to differentiate between a variety of cells in vaginal smears for detection of vaginal, uterine and cervical cancer. In addition, this procedure is valuable for staining a variety of other bodily secretions and cell smears. The procedure was developed in the early 1940's by George Papanicolaou.

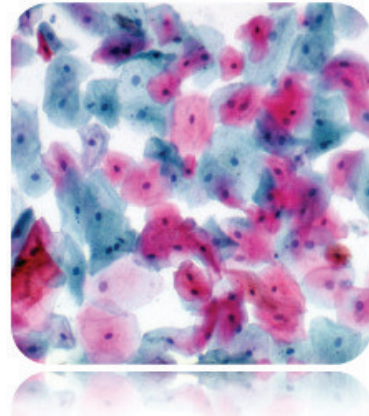
Nuclei:	Blue
High Keratin Cells:	Orange
Superficial Cells:	Pink
Erythrocytes:	Dark Pink
Parabasal Cells:	Blue/Green
Intermediate Cells:	Blue/Green
Metaplastic Cells:	May contain both Blue/Green and Pink.

Uses/Limitations:

Not to be taken internally.
For In-Vitro Diagnostic use only.
Histological applications.
Do not use if reagents become cloudy.
Do not use past expiration date.
Use caution when handling reagents.
Non-Sterile.

Control Tissue:

Gynecological Smear.
Any Superficial Cell Smear.



Ordering information regarding individual components on back page!

Kit Contents:

<u>Item #</u>	<u>Components</u>	<u>Volume</u>	<u>Storage</u>
HMM030	Hematoxylin, Mayer's (Lillie's Modification)	30 ml	18-25°C
OGA030	OG-6 Solution	30 ml	18-25°C
EAC030	EA-50 Stain Solution	30 ml	18-25°C

Precautions:

Avoid contact with skin and eyes.
Harmful if swallowed.
Follow all Federal, State, and local regulations regarding disposal.

Storage: 18° C



25° C



ScyTek Laboratories, Inc.
205 South 600 West
Logan, UT 84321
U.S.A.



 EmergoEurope (31)(0) 70 345-8570
Molsstraat 15
2513 BH Hague, The Netherlands

P.O. Box 3286 - Logan, Utah 84323, U.S.A. - Tel. (800) 729-8350 – Tel. (435) 755-9848 - Fax (435) 755-0015 - www.scytek.com

Procedure:

1. Place slide in 95% alcohol for 5 minutes.
 2. Place slide in 70% alcohol for 5 minutes.
 3. Place slide in distilled water for 2 minutes.
 4. Apply adequate Hematoxylin, Mayer's (Lillie's Modification) to completely cover cell smear and incubate for 5 minutes.
 5. Rinse slide 1 time in distilled water to remove excess stain.
 6. Rinse slide in tap water for 2 minutes..
 7. Rinse slide in 2 changes of distilled water.
 8. Dip slide several times in 95% alcohol and blot excess off.
 9. Apply adequate OG-6 Stain Solution to completely cover cell smear to excess and incubate for 2 minutes.
 10. Rinse slide gently using absolute alcohol.
 11. Apply adequate EA-50 Stain Solution to completely cover cell smear to excess and incubate for 3 minutes.
- Note: Do not allow EA-50 Stain Solution to evaporate completely. Add additional drops as needed.
12. Rinse slide gently using absolute alcohol.
 13. Quickly dehydrate slide in 3 changes of absolute alcohol.
 14. Clear slide and mount in synthetic resin.


References:

1. Papanicolaou, G.N. Atlas of Exfoliative Cytology, Harvard University Press, Cambridge, 1954.

Bulk Reagent Ordering Information and Current Pricing at www.scytek.com

Description:	Catalog #	Volume
Hematoxylin, Mayer's (Lillie's Modification)	HMM500	500 ml
	HMM999	1000 ml
	HMM3800	1 Gallon
OG-6 Solution	OGA500	500 ml
	OGA999	1000 ml
	OGA3800	1 Gallon
EA-50 Stain Solution	EAC500	500 ml
	EAC999	1000 ml
	EAC3800	1 Gallon

Storage: 18° C  25° C

 ScyTek Laboratories, Inc.
205 South 600 West
Logan, UT 84321
U.S.A.



 EmergoEurope (31)(0) 70 345-8570
Molsstraat 15
2513 BH Hague, The Netherlands